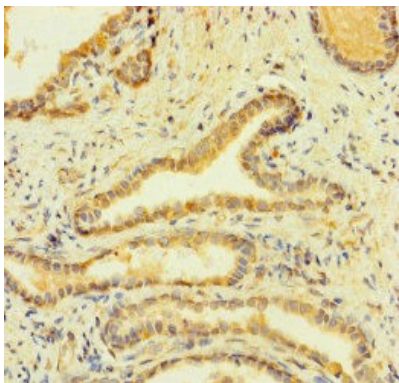
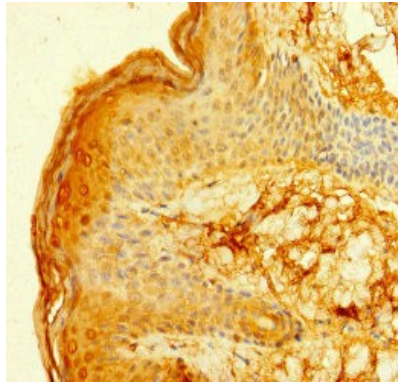


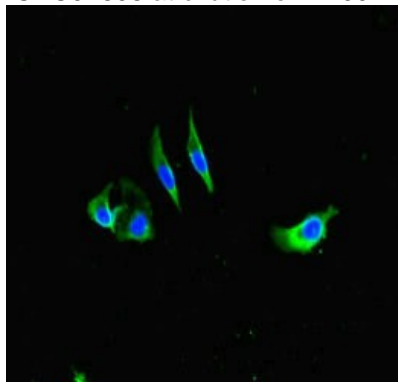
# FCER1A Antibody

<b>Product Code:</b>	CAC07608
<b>Abbreviation:</b>	High affinity immunoglobulin epsilon receptor subunit alpha
<b>Storage:</b>	Upon receipt, store at -20° C or -80° C. Avoid repeated freeze.
<b>Uniprot NO.:</b>	P12319
<b>Immunogen:</b>	Recombinant human High affinity immunoglobulin epsilon receptor subunit alpha protein (26-205AA)
<b>Raised In:</b>	Rabbit
<b>Species Reactivity:</b>	Human,Mouse
<b>Tested Applications:</b>	ELISA,WB,IHC,IF;Recommended dilution:WB:1:2000-1:5000,IHC:1:20-1:200,IF:1:50-1:200
<b>Relevance:</b>	Binds to the Fc region of immunoglobulins epsilon. High affinity receptor. Responsible for initiating the allergic response. Binding of allergen to receptor-bound IgE leads to cell activation and the release of mediators (such as histamine) responsible for the manifestations of allergy. The same receptor also induces the secretion of important lymphokines.
<b>Form:</b>	Liquid
<b>Conjugate:</b>	Non-conjugated
<b>Storage Buffer:</b>	Preservative: 0.03% Proclin 300 Constituents: 50% Glycerol, 0.01M PBS, PH 7.4
<b>Purification Method:</b>	>95%,Protein G purified
<b>Isotype:</b>	IgG
<b>Clonality:</b>	Polyclonal
<b>Alias:</b>	High affinity immunoglobulin epsilon receptor subunit alpha,Fc-epsilon RI-alpha,FcERI,IgE Fc receptor subunit alpha,FCER1A,FCE1A
<b>Species:</b>	Human
<b>Image:</b>	

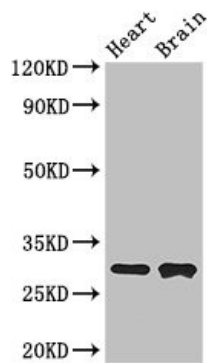
Immunohistochemistry of paraffin-embedded human prostate cancer using CAC07608 at dilution of 1:100



Immunohistochemistry of paraffin-embedded human skin tissue using CAC07608 at dilution of 1:100



Immunofluorescent analysis of HeLa cells using CAC07608 at a dilution of 1:100 and Alexa Fluor 488-conjugated AffiniPure Goat Anti-Rabbit IgG(H+L)



#### Western Blot

Positive WB detected in: Mouse heart tissue, Mouse brain tissue  
All lanes: FCER1A antibody at 3ug/ml

#### Secondary

Goat polyclonal to rabbit IgG at 1/50000 dilution

Predicted band size: 30 kDa

Observed band size: 30 kDa