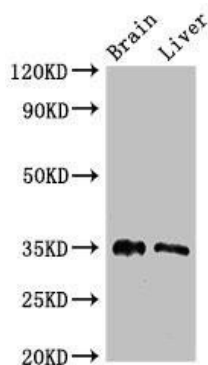


PTF1A Antibody

Product Code:	CAC08024
Abbreviation:	Pancreas transcription factor 1 subunit alpha
Storage:	Upon receipt, store at -20° C or -80° C. Avoid repeated freeze.
Uniprot NO.:	Q7RTS3
Immunogen:	Recombinant Human Pancreas transcription factor 1 subunit alpha protein (224-325AA)
Raised In:	Rabbit
Species Reactivity:	Human,Mouse,Rat
Tested Applications:	ELISA,WB,IHC,IF;Recommended dilution:WB:1:500-1:5000,IHC:1:20-1:200,IF:1:50-1:200
Relevance:	Transcription factor implicated in the cell fate determination in various organs. Binds to the E-box consensus sequence 5'-CANNTG-3'. Plays a role in early and late pancreas development and differentiation. Important for determining whether cells allocated to the pancreatic buds continue towards pancreatic organogenesis or revert back to duodenal fates. May be involved in the maintenance of exocrine pancreas-specific gene expression including ELA1 and amylase. Required for the formation of pancreatic acinar and ductal cells. Plays an important role in cerebellar development. Directly regulated by FOXN4 and RORC during retinal development, FOXN4-PTF1A pathway plays a central role in directing the differentiation of retinal progenitors towards horizontal and amacrine fates.
Form:	Liquid
Conjugate:	Non-conjugated
Storage Buffer:	Preservative: 0.03% Proclin 300 Constituents: 50% Glycerol, 0.01M PBS, pH 7.4
Purification Method:	>95%,Protein G purified
Isotype:	IgG
Clonality:	Polyclonal
Alias:	Pancreas transcription factor 1 subunit alpha,Class A basic helix-loop-helix protein 29,bHLHa29,Pancreas-specific transcription factor 1a,bHLH transcription factor p48,p48 DNA-binding subunit of transcription factor PTF1,PTF1-p48,PTF1A,BHLHA29,PTF1P48
Species:	Human
Image:	



Western Blot

Positive WB detected in: Mouse brain tissue, Rat liver tissue

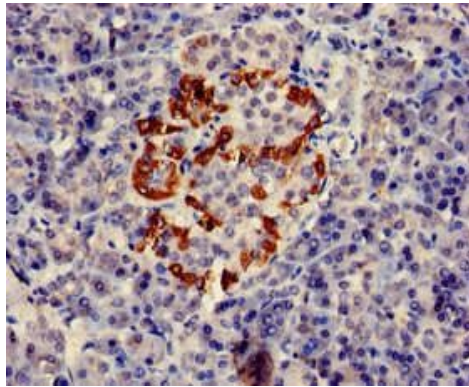
All lanes:PTF1A antibody at 2.7ug/ml

Secondary

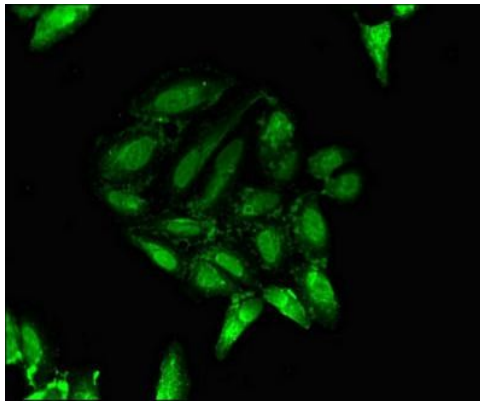
Goat polyclonal to rabbit IgG at 1/50,000 dilution

Predicted band size: 35 KDa

Observed band size: 35 KDa



Immunohistochemistry of paraffin-embedded human pancreatic tissue using CAC08024 at dilution of 1:100



Immunofluorescent analysis of HeLa cells using CAC08024 at a dilution of 1:100 and Alexa Fluor 488-conjugated AffiniPure Goat Anti-Rabbit IgG(H+L)