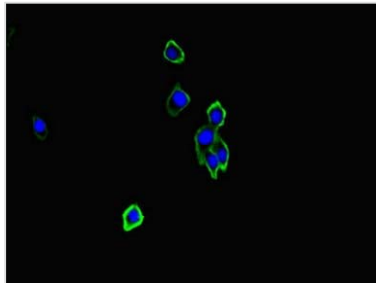


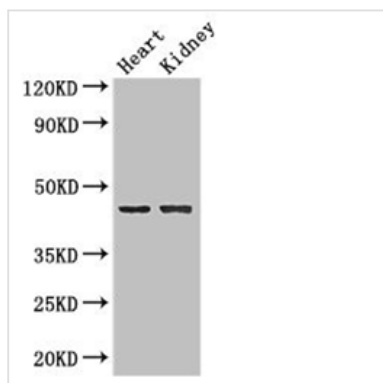
## NRXN1 Antibody

<b>Product Code</b>	CAC08098
<b>Abbreviation</b>	Neurexin-1-beta
<b>Storage</b>	Upon receipt, store at -20°C or -80°C. Avoid repeated freeze.
<b>Uniprot No.</b>	P58400
<b>Immunogen</b>	Recombinant Human Neurexin-1-beta protein (184-363AA)
<b>Raised In</b>	Rabbit
<b>Species Reactivity</b>	Human, Mouse
<b>Tested Applications</b>	ELISA, WB, IF; Recommended dilution: WB:1:2000-1:5000, IF:1:50-1:200
<b>Relevance</b>	Neuronal cell surface protein that may be involved in cell recognition and cell adhesion by forming intracellular junctions through binding to neuroligins. May play a role in formation or maintenance of synaptic junctions. May mediate intracellular signaling. May play a role in angiogenesis (By similarity).
<b>Form</b>	Liquid
<b>Conjugate</b>	Non-conjugated
<b>Storage Buffer</b>	Preservative: 0.03% Proclin 300 Constituents: 50% Glycerol, 0.01M PBS, PH 7.4
<b>Purification Method</b>	>95%, Protein G purified
<b>Isotype</b>	IgG
<b>Clonality</b>	Polyclonal
<b>Alias</b>	Neurexin-1-beta (Neurexin I-beta), NRXN1
<b>Species</b>	Human
<b>Research Area</b>	Others
<b>Target Names</b>	NRXN1

### Image



Immunofluorescent analysis of HepG2 cells using CAC08098 at dilution of 1:100 and Alexa Fluor 488-conjugated AffiniPure Goat Anti-Rabbit IgG(H+L)



**Western Blot**

Positive WB detected in: Mouse heart tissue,  
Mouse kidney tissue

All lanes: NRXN1 antibody at 2g/ml

Secondary

Goat polyclonal to rabbit IgG at 1/50000 dilution

Predicted band size: 47 kDa

Observed band size: 47 kDa