

## anti- ABCF2 antibody

### Product Information

Catalog No.:	CAF50003
Size:	100µg
Form:	liquid
Purification:	Immunogen affinity purified
Purity:	≥95% as determined by SDS-PAGE
Host:	Rabbit
Clonality:	polyclonal
Clone ID:	None
IsoType:	IgG
Storage:	PBS with 0.02% sodium azide and 50% glycerol pH 7.3, -20°C for 12 months (Avoid repeated freeze / thaw cycles.)

### Background

This gene encodes a member of the ATP-binding cassette (ABC) transporter superfamily. ATP-binding cassette proteins transport various molecules across extra- and intracellular membranes. Alterations in this gene may be involved in cancer progression. Alternative splicing results in multiple transcript variants. Related pseudogenes have been identified on chromosomes 3 and 7.

### Immunogen information

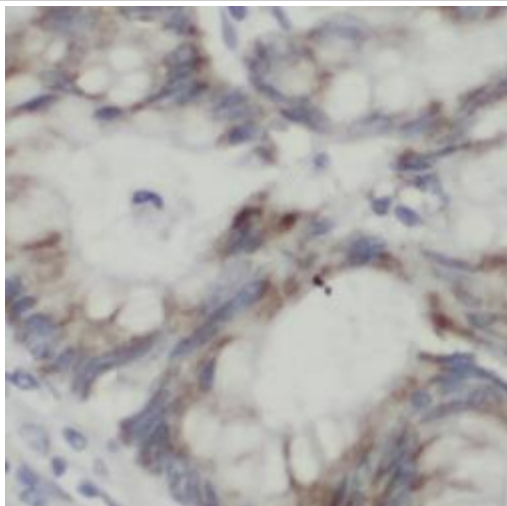
Immunogen:	ATP-binding cassette, sub-family F (GCN20), member 2
Synonyms:	ABC28, ABCF2, DKFZp586K1823, EST133090, HUSSY 18, HUSSY18, M ABC1
Observed MW:	72 kDa
Uniprot ID :	Q9UG63

### Application

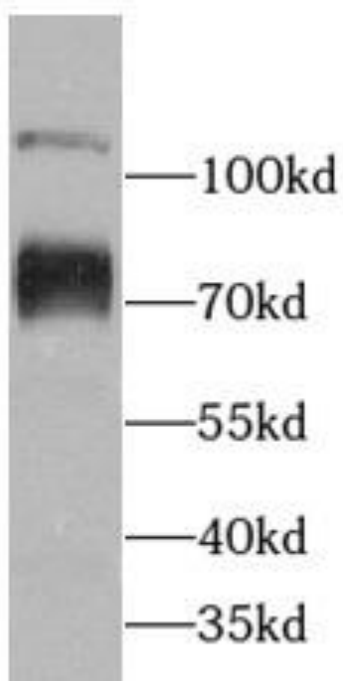
Reactivity:	Human, Mouse
Tested Application:	ELISA, WB, IHC
Recommended dilution:	WB: 1:500 - 1:2000; IHC: 1:20 - 1:200
Image:	

**This Antibody is for Research Use Only. Not for Diagnostic Procedures.**

This is a sample Antibody manual only. Always refer to the hard copy manual included in the Antibody for your experiment.



Immunohistochemistry of paraffin-embedded human colon cancer using CAF50003(ABCF2 antibody) at dilution of 1:100



HEK-293 cells were subjected to SDS PAGE followed by western blot with CAF50003(ABCF2 antibody) at dilution of 1:1000

**This Antibody is for Research Use Only. Not for Diagnostic Procedures.**

This is a sample Antibody manual only. Always refer to the hard copy manual included in the Antibody for your experiment.