

## anti- ADRA1A-Specific antibody

### Product Information

Catalog No.:	CAF50009
Size:	100µg
Form:	liquid
Purification:	Immunogen affinity purified
Purity:	≥95% as determined by SDS-PAGE
Host:	Rabbit
Clonality:	polyclonal
Clone ID:	None
IsoType:	IgG
Storage:	PBS with 0.02% sodium azide and 50% glycerol pH 7.3, -20°C for 12 months (Avoid repeated freeze / thaw cycles.)

### Background

ADRA1A, also named as ADRA1C, belongs to the G-protein coupled receptor 1 family. ADRA1A mediates its action by association with G proteins that activate a phosphatidylinositol-calcium second messenger system. Its effect is mediated by G(q) and G(11) proteins. The antibody is specific to ADRA1A.

### Immunogen information

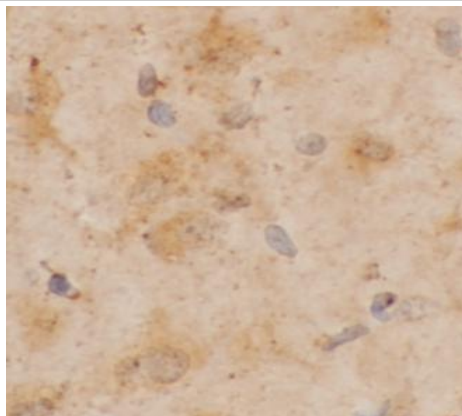
Immunogen:	adrenergic, alpha-1A-, receptor
Synonyms:	ADRA1A, ADRA1C, ADRA1L1, Alpha 1A adrenergic receptor, Alpha 1A adrenoceptor, Alpha 1A adrenoreceptor, Alpha 1C adrenergic receptor, Alpha adrenergic receptor 1c, ALPHA1AAR
Observed MW:	52 kDa
Uniprot ID :	P35348

### Application

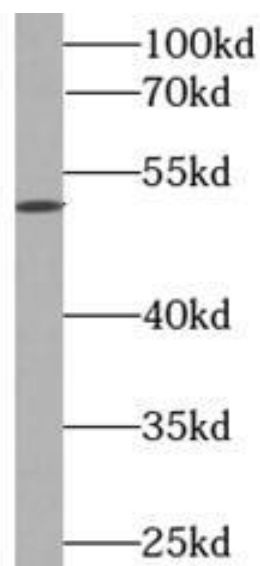
Reactivity:	Human, Mouse, Rat
Tested Application:	ELISA, WB, IHC
Recommended dilution:	WB: 1:200-1:2000; IHC: 1:20-1:500
Image:	

**This Antibody is for Research Use Only. Not for Diagnostic Procedures.**

This is a sample Antibody manual only. Always refer to the hard copy manual included in the Antibody for your experiment.



Immunohistochemistry of paraffin-embedded rat brain using CAF50009(ADRA1A antibody) at dilution of 1:100



mouse brain tissue were subjected to SDS PAGE followed by western blot with CAF50009(ADRA1A antibody) at dilution of 1:1000