

## anti- AFM antibody

### Product Information

Catalog No.:	CAF50012
Size:	100µg
Form:	liquid
Purification:	Immunogen affinity purified
Purity:	≥95% as determined by SDS-PAGE
Host:	Rabbit
Clonality:	polyclonal
Clone ID:	None
IsoType:	IgG
Storage:	PBS with 0.02% sodium azide and 50% glycerol pH 7.3, -20°C for 12 months (Avoid repeated freeze / thaw cycles.)

### Background

Vitamin E binding protein. May transport vitamin E in body fluids under conditions where the lipoprotein system is not sufficient. May be involved in the regulation and transport of vitamin E at the blood-brain barrier.

### Immunogen information

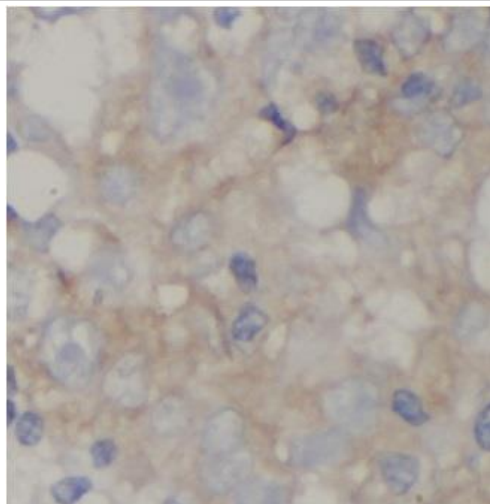
Immunogen:	afamin
Synonyms:	Afamin, AFM, ALB2, ALBA, ALF, Alpha Alb, Alpha albumin
Observed MW:	70-85 kDa
Uniprot ID :	P43652

### Application

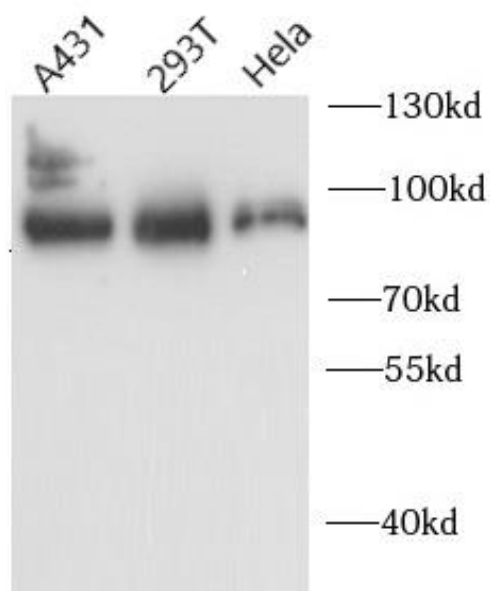
Reactivity:	Human, Mouse, Rat
Tested Application:	ELISA, WB, IHC
Recommended dilution:	WB: 1:200-1:2000; IHC: 1:20-1:200
Image:	

**This Antibody is for Research Use Only. Not for Diagnostic Procedures.**

This is a sample Antibody manual only. Always refer to the hard copy manual included in the Antibody for your experiment.



Immunohistochemistry of paraffin-embedded human breast tissue slide using CAF50012(AFM Antibody) at dilution of 1:50



various lysates were subjected to SDS PAGE followed by western blot with CAF50012(AFM antibody) at dilution of 1:1000

**This Antibody is for Research Use Only. Not for Diagnostic Procedures.**

This is a sample Antibody manual only. Always refer to the hard copy manual included in the Antibody for your experiment.