

## anti- AGA antibody

### Product Information

Catalog No.:	CAF50013
Size:	100µg
Form:	liquid
Purification:	Immunogen affinity purified
Purity:	≥95% as determined by SDS-PAGE
Host:	Rabbit
Clonality:	polyclonal
Clone ID:	None
IsoType:	IgG
Storage:	PBS with 0.02% sodium azide and 50% glycerol pH 7.3, -20°C for 12 months (Avoid repeated freeze / thaw cycles.)

### Background

Cleaves the GlcNAc-Asn bond which joins oligosaccharides to the peptide of asparagine-linked glycoproteins.

### Immunogen information

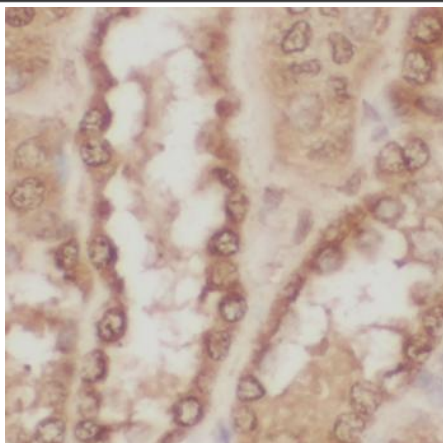
Immunogen:	aspartylglucosaminidase
Synonyms:	AGA, AGU, aspartylglucosaminidase, ASRG, GA, Glycosylasparaginase
Observed MW:	18, 37 kDa
Uniprot ID :	P20933

### Application

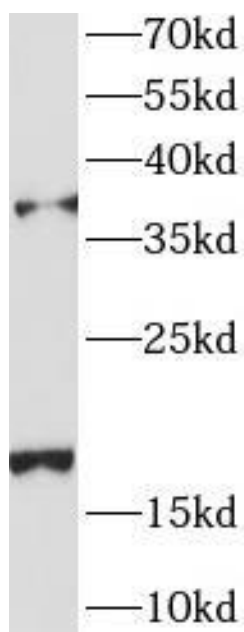
Reactivity:	Human, Mouse, Rat
Tested Application:	ELISA, IHC, WB
Recommended dilution:	WB: 1:500-1:2000; IHC: 1:20-1:200
Image:	

**This Antibody is for Research Use Only. Not for Diagnostic Procedures.**

This is a sample Antibody manual only. Always refer to the hard copy manual included in the Antibody for your experiment.



Immunohistochemistry of paraffin-embedded human kidney tissue slide using CAF50013(AGA Antibody) at dilution of 1:50



HepG2 cells were subjected to SDS PAGE followed by western blot with CAF50013(AGA Antibody) at dilution of 1:1000

SAMPLE

**This Antibody is for Research Use Only. Not for Diagnostic Procedures.**

This is a sample Antibody manual only. Always refer to the hard copy manual included in the Antibody for your experiment.