

anti- AKT2 antibody

Product Information

Catalog No.:	CAF50016
Size:	100µg
Form:	liquid
Purification:	Immunogen affinity purified
Purity:	≥95% as determined by SDS-PAGE
Host:	Rabbit
Clonality:	polyclonal
Clone ID:	None
IsoType:	IgG
Storage:	PBS with 0.02% sodium azide and 50% glycerol pH 7.3, -20°C for 12 months (Avoid repeated freeze / thaw cycles.)

Background

AKT2 is one of 3 closely related serine/threonine-protein kinases (AKT1, AKT2 and AKT3) called the AKT kinase, and which regulate many processes including metabolism, proliferation, cell survival, growth and angiogenesis and their activation has been observed in a wide variety of cancers. AKT2 is mainly involved in cancer cell survival, apoptosis inhibition, migration and invasion(PMID:21979951). The full length protein has four glycosylation sites.

Immunogen information

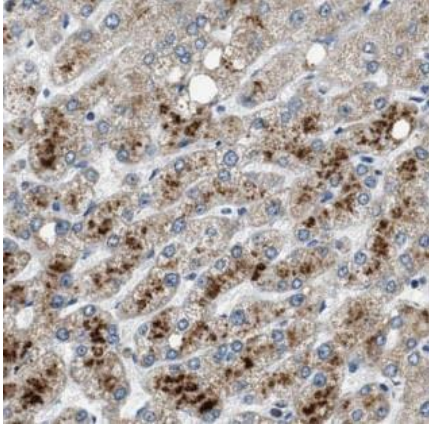
Immunogen:	v-akt murine thymoma viral oncogene homolog 2
Synonyms:	AKT2, PKB beta, PKBB, PKBBETA, PRKBB, Protein kinase Akt 2, Protein kinase B beta, RAC BETA, RAC PK beta
Observed MW:	55 kDa
Uniprot ID :	P31751

Application

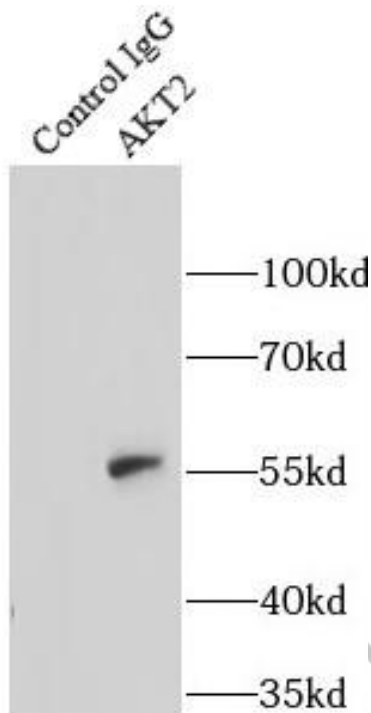
Reactivity:	Human, Mouse, Rat
Tested Application:	ELISA, WB, IHC, IP
Recommended dilution:	WB: 1:500-1:2000; IP: 1:200-1:2000; IHC: 1:20-1:200
Image:	

This Antibody is for Research Use Only. Not for Diagnostic Procedures.

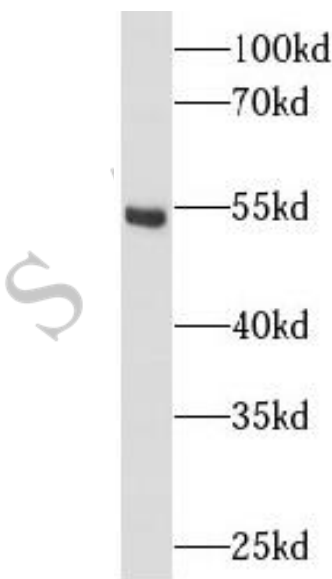
This is a sample Antibody manual only. Always refer to the hard copy manual included in the Antibody for your experiment.



Immunohistochemical of paraffin-embedded human liver using CAF50016(AKT2 antibody) at dilution of 1:100



IP Result of anti-AKT2 (IP:CAF50016, 4ug; Detection:CAF50016 1:500) with HepG2 cells lysate 1600ug.



293 cells were subjected to SDS PAGE followed by western blot with CAF50016(AKT2 Antibody) at dilution of 1:1000

This Antibody is for Research Use Only. Not for Diagnostic Procedures.

This is a sample Antibody manual only. Always refer to the hard copy manual included in the Antibody for your experiment.

SAMPLE ONLY

This Antibody is for Research Use Only. Not for Diagnostic Procedures.

This is a sample Antibody manual only. Always refer to the hard copy manual included in the Antibody for your experiment.