

anti- AKT3 antibody

Product Information

Catalog No.:	CAF50017
Size:	100µg
Form:	liquid
Purification:	Immunogen affinity purified
Purity:	≥95% as determined by SDS-PAGE
Host:	Rabbit
Clonality:	polyclonal
Clone ID:	None
IsoType:	IgG
Storage:	PBS with 0.02% sodium azide and 50% glycerol pH 7.3, -20°C for 12 months (Avoid repeated freeze / thaw cycles.)

Background

AKT3 is one of 3 closely related serine/threonine-protein kinases(AKT1, AKT2 and AKT3) called the AKT kinase, and which regulate many processes including metabolism, proliferation, cell survival, growth and angiogenesis. This is mediated through serine and/or threonine phosphorylation of a range of downstream substrates. Over 100 substrate candidates have been reported so far, but for most of them, no isoform specificity has been reported. AKT3 is the least studied AKT isoform. It plays an important role in brain development and is crucial for the viability of malignant glioma cells. AKT3 isoform may also be the key molecule in up-regulation and down-regulation of MMP13 via IL13. Required for the coordination of mitochondrial biogenesis with growth factor-induced increases in cellular energy demands. Down-regulation by RNA interference reduces the expression of the phosphorylated form of BAD, resulting in the induction of caspase-dependent apoptosis.

Immunogen information

Immunogen:	v-akt murine thymoma viral oncogene homolog 3(protein kinase B, gamma)
Synonyms:	AKT3, DKFZp434N0250, PKB GAMMA, PKBG, PRKBG, Protein kinase Akt 3, Protein kinase B gamma, RAC gamma, RAC PK gamma, STK 2
Observed MW:	54 kDa
Uniprot ID :	Q9Y243

Application

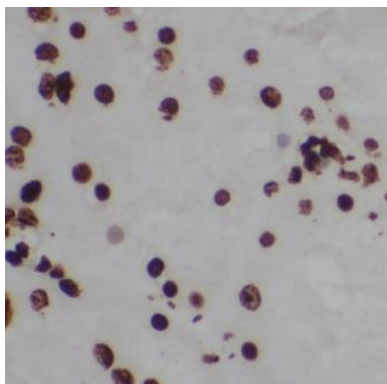
Reactivity:	Human, Mouse, Rat, Zebrafish
Tested Application:	ELISA, WB, IHC

This Antibody is for Research Use Only. Not for Diagnostic Procedures.

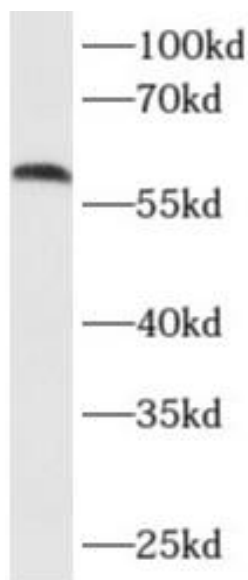
This is a sample Antibody manual only. Always refer to the hard copy manual included in the Antibody for your experiment.

Recommended dilution: WB: 1:200-1:2000; IHC: 1:20-1:200

Image:



Immunohistochemistry of paraffin-embedded human kidney tissue slide using CAF50017(AKT3 Antibody) at dilution of 1:50



MCF7 cells were subjected to SDS PAGE followed by western blot with CAF50017(AKT3 antibody) at dilution of 1:500

This Antibody is for Research Use Only. Not for Diagnostic Procedures.

This is a sample Antibody manual only. Always refer to the hard copy manual included in the Antibody for your experiment.