

## anti- ALDH7A1 antibody

### Product Information

Catalog No.:	CAF50019
Size:	100µg
Form:	liquid
Purification:	Immunogen affinity purified
Purity:	≥95% as determined by SDS-PAGE
Host:	Rabbit
Clonality:	polyclonal
Clone ID:	None
IsoType:	IgG
Storage:	PBS with 0.02% sodium azide and 50% glycerol pH 7.3, -20°C for 12 months (Avoid repeated freeze / thaw cycles.)

### Background

Multifunctional enzyme mediating important protective effects. Metabolizes betaine aldehyde to betaine, an important cellular osmolyte and methyl donor. Protects cells from oxidative stress by metabolizing a number of lipid peroxidation-derived aldehydes. Involved in lysine catabolism.

### Immunogen information

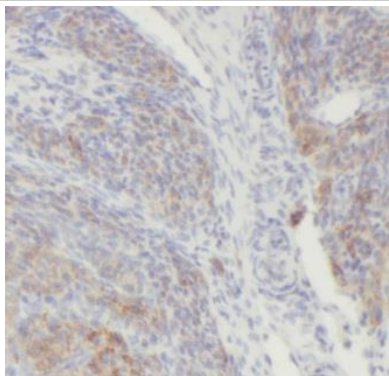
Immunogen:	aldehyde dehydrogenase 7 family, member A1
Synonyms:	ALDH7A1, Alpha AASA dehydrogenase, Antiquitin 1, ATQ1, Betaine aldehyde dehydrogenase, EPD, FLJ11738, FLJ92814, P6c dehydrogenase, PDE
Observed MW:	55 kDa
Uniprot ID :	P49419

### Application

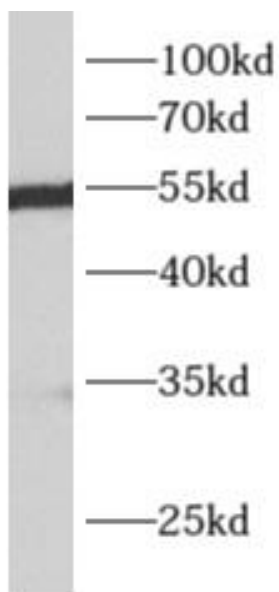
Reactivity:	Human, Mouse, Rat
Tested Application:	ELISA, WB, IHC
Recommended dilution:	WB: 1:500-1:5000; IHC: 1:20-1:200
Image:	

**This Antibody is for Research Use Only. Not for Diagnostic Procedures.**

This is a sample Antibody manual only. Always refer to the hard copy manual included in the Antibody for your experiment.



Immunohistochemistry of paraffin-embedded human ovary tumor using CAF50019(ALDH7A1 antibody) at dilution of 1:50



mouse liver tissue were subjected to SDS PAGE followed by western blot with CAF50019(ALDH7A1 antibody) at dilution of 1:1000