

## anti- ALDOA antibody

### Product Information

Catalog No.:	CAF50020
Size:	100µg
Form:	liquid
Purification:	Immunogen affinity purified
Purity:	≥95% as determined by SDS-PAGE
Host:	Rabbit
Clonality:	polyclonal
Clone ID:	None
IsoType:	IgG
Storage:	PBS with 0.02% sodium azide and 50% glycerol pH 7.3, -20°C for 12 months (Avoid repeated freeze / thaw cycles.)

### Background

Plays a key role in glycolysis and gluconeogenesis. In addition, may also function as scaffolding protein(By similarity).

### Immunogen information

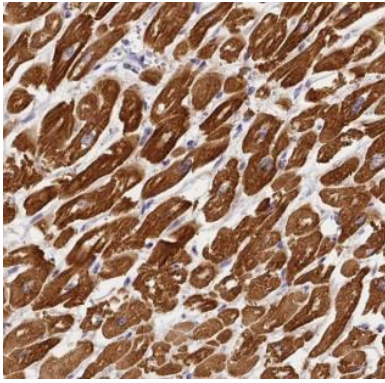
Immunogen:	aldolase A, fructose-bisphosphate
Synonyms:	ALDOA ; Aldolase A; Lung cancer antigen NY LU 1; Muscle type aldolase
Observed MW:	39 kDa
Uniprot ID :	P04075

### Application

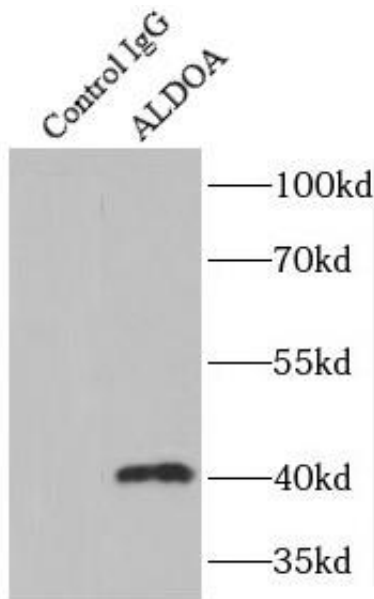
Reactivity:	Human, Mouse, Rat
Tested Application:	ELISA, WB, IHC, IF, IP, FC
Recommended dilution:	WB: 1:500-1:5000; IHC: 1:20-1:200; IP: 1:500-1:5000; IF: 1:10-1:100
Image:	

**This Antibody is for Research Use Only. Not for Diagnostic Procedures.**

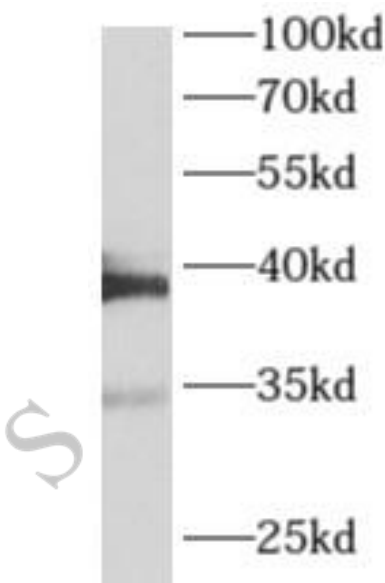
This is a sample Antibody manual only. Always refer to the hard copy manual included in the Antibody for your experiment.



Immunohistochemistry of paraffin-embedded human skeletal muscle using CAF50020(ALDOA antibody) at dilution of 1:50



IP Result of anti-ALDOA (IP:CAF50020, 3ug; Detection:CAF50020 1:1000) with HepG2 cells lysate 6000ug.



HeLa cells were subjected to SDS PAGE followed by western blot with CAF50020(ALDOA antibody) at dilution of 1:500

**This Antibody is for Research Use Only. Not for Diagnostic Procedures.**

This is a sample Antibody manual only. Always refer to the hard copy manual included in the Antibody for your experiment.