

anti- ALK,CD246 antibody

Product Information

Catalog No.:	CAF50021
Size:	100µg
Form:	liquid
Purification:	Immunogen affinity purified
Purity:	≥95% as determined by SDS-PAGE
Host:	Rabbit
Clonality:	polyclonal
Clone ID:	None
IsoType:	IgG
Storage:	PBS with 0.02% sodium azide and 50% glycerol pH 7.3, -20°C for 12 months (Avoid repeated freeze / thaw cycles.)

Background

Anaplastic Lymphoma Kinase (ALK), also known as CD246, is a 220 kDa transmembrane glycoprotein that is primarily expressed in the developing nervous system. ALK contains one LDL Receptor (LDLR) class A domain, two meprin/A5-protein/PTPmu (MAM) domains, and a cytoplasmic kinase domain. Chromosomal translocation involving ALK and the nucleolar NPM protein result in a cytoplasmic fusion protein that exists as a dimer. The kinase domain in NPM-ALK is constitutively active and participates in cellular transformation. ALK translocations are found in a variety of tumors. Within the extracellular domain, human and mouse ALK share 88% amino acid sequence identity.

Immunogen information

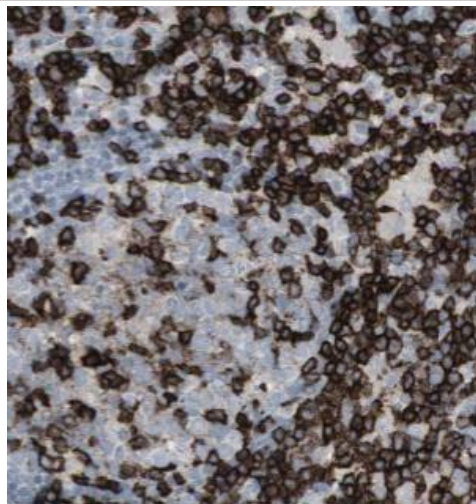
Immunogen:	anaplastic lymphoma receptor tyrosine kinase
Synonyms:	ALK, ALK tyrosine kinase receptor, ALK,CD246, Anaplastic lymphoma kinase, CD246, TFG/ALK
Observed MW:	140-220 kDa
Uniprot ID :	Q9UM73

Application

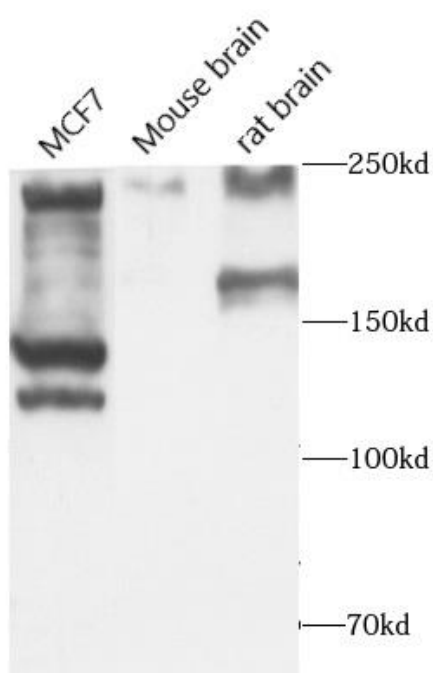
Reactivity:	Human, Mouse, Rat
Tested Application:	ELISA, IHC, WB
Recommended dilution:	WB: 1:500-1:2000; IHC: 1:20-1:200
Image:	

This Antibody is for Research Use Only. Not for Diagnostic Procedures.

This is a sample Antibody manual only. Always refer to the hard copy manual included in the Antibody for your experiment.



Immunohistochemistry of paraffin-embedded human lymphoma tissue slide using CAF50021 (ALK, CD246 Antibody) at dilution of 1:50



Various lysates were subjected to SDS PAGE followed by western blot with CAF50021 (ALK, CD246 Antibody) at dilution of 1:600

This Antibody is for Research Use Only. Not for Diagnostic Procedures.

This is a sample Antibody manual only. Always refer to the hard copy manual included in the Antibody for your experiment.