

anti- Alpha B Crystallin antibody

Product Information

Catalog No.:	CAF50024
Size:	100µg
Form:	liquid
Purification:	Immunogen affinity purified
Purity:	≥95% as determined by SDS-PAGE
Host:	Rabbit
Clonality:	polyclonal
Clone ID:	None
IsoType:	IgG
Storage:	PBS with 0.02% sodium azide and 50% glycerol pH 7.3, -20°C for 12 months (Avoid repeated freeze / thaw cycles.)

Background

Alpha B-crystallin, encoded by CRYAB gene, is multifunctional, serving as both a major structural protein in the lens and a small heat-shock protein in other tissues in mammals. Alpha B-crystallin may contribute to the transparency and refractive index of the lens. Single nucleotide polymorphisms(SNPs) in the promoter region of CRYAB gene have been associated with in multiple sclerosis. Mutations in the CRYAB gene cause distinct clinical phenotypes including isolated posterior polar cataract, myofibrillar myopathy, cardiomyopathy, or a multisystemic disorder combining all these features. Impairment of alpha-B crystallin dimerization may be relevant to the pathogenesis of these disorders.

Immunogen information

Immunogen:	crystallin, alpha B
Synonyms:	Alpha B Crystallin, Alpha crystallin B chain, Alpha(B) crystallin, CRYA2, CRYAB, crystallin, alpha B, CTPP2, Heat shock protein beta 5, HSPB5, Rosenthal fiber component
Observed MW:	20 kDa
Uniprot ID :	P02511

Application

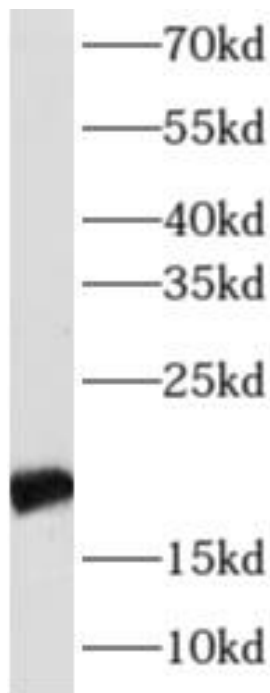
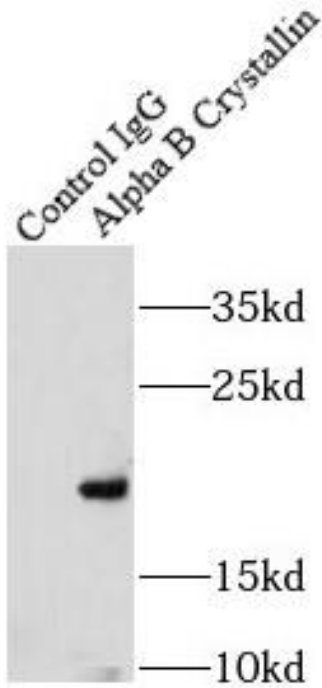
Reactivity:	Human, Mouse, Rat
Tested Application:	ELISA, WB, IHC, IP
Recommended dilution:	WB: 1:500-1:5000; IHC: 1:20-1:200; IP: 1:200-1:2000

Image:

This Antibody is for Research Use Only. Not for Diagnostic Procedures.

This is a sample Antibody manual only. Always refer to the hard copy manual included in the Antibody for your experiment.

IP Result of anti-Alpha B Crystallin
(IP:CAF50024, 3ug; Detection:CAF50024 1:500)
with mouse heart tissue lysate 4000ug.



human heart tissue were subjected to SDS PAGE
followed by western blot with CAF50024(CRYAB
antibody) at dilution of 1:500

This Antibody is for Research Use Only. Not for Diagnostic Procedures.

This is a sample Antibody manual only. Always refer to the hard copy manual included in the Antibody for your experiment.