

anti- Alpha-1-Antitrypsin antibody

Product Information

Catalog No.:	CAF50027
Size:	100µg
Form:	liquid
Purification:	Immunogen affinity purified
Purity:	≥95% as determined by SDS-PAGE
Host:	Rabbit
Clonality:	polyclonal
Clone ID:	None
IsoType:	IgG
Storage:	PBS with 0.02% sodium azide and 50% glycerol pH 7.3, -20°C for 12 months (Avoid repeated freeze / thaw cycles.)

Background

The protein encoded by this gene is secreted and is a serine protease inhibitor whose targets include elastase, plasmin, thrombin, trypsin, chymotrypsin, and plasminogen activator. Defects in this gene can cause emphysema or liver disease. Several transcript variants encoding the same protein have been found for this gene.

Immunogen information

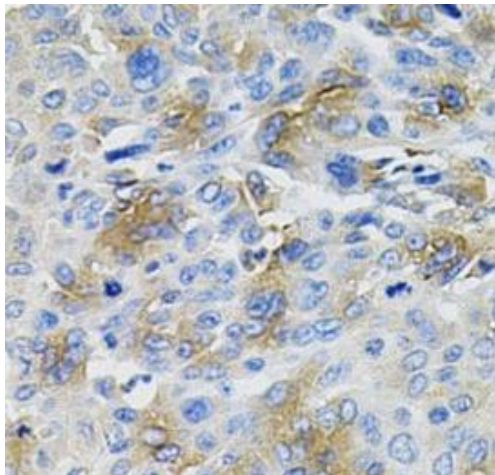
Immunogen:	serpin peptidase inhibitor, clade A (alpha-1 antiproteinase, antitrypsin), member 1
Synonyms:	A1A, A1AT, AAT, Alpha 1 antiproteinase, Alpha 1 antitrypsin, Alpha 1 protease inhibitor, PI, PI1, PRO2209, PRO2275, Serpin A1, SERPINA1, SPAAT, α1-antitrypsin
Observed MW:	45 kDa, 50 kDa
Uniprot ID :	P01009

Application

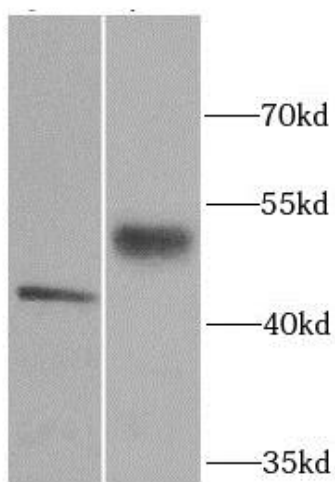
Reactivity:	Human, Mouse, Rat
Tested Application:	ELISA, IHC, WB
Recommended dilution:	WB: 1:500 - 1:2000; IHC: 1:50 - 1:200
Image:	

This Antibody is for Research Use Only. Not for Diagnostic Procedures.

This is a sample Antibody manual only. Always refer to the hard copy manual included in the Antibody for your experiment.



Immunohistochemistry of paraffin-embedded human liver using CAF50027(Alpha-1-Antitrypsin antibody) at dilution of 1:50



mouse kidney tissue were subjected to SDS PAGE followed by western blot with CAF50027(Alpha-1-Antitrypsin antibody) at dilution of 1:1000

SAMPLE

This Antibody is for Research Use Only. Not for Diagnostic Procedures.

This is a sample Antibody manual only. Always refer to the hard copy manual included in the Antibody for your experiment.