

## anti- Angiogenin antibody

### Product Information

Catalog No.:	CAF50030
Size:	100µg
Form:	liquid
Purification:	Immunogen affinity purified
Purity:	≥95% as determined by SDS-PAGE
Host:	Rabbit
Clonality:	polyclonal
Clone ID:	None
IsoType:	IgG
Storage:	PBS with 0.02% sodium azide and 50% glycerol pH 7.3, -20°C for 12 months (Avoid repeated freeze / thaw cycles.)

### Background

Angiogenin(ANG), a angiogenic ribonuclease, is a member of the vertebrate-specific, secreted RNASE superfamily. Angiogenin, originally identified as a tumor angiogenic factor, was related with the growth and metastasis of numerous tumors. Angiogenin is also a component of normal human plasma and follicular Xuid. Its widespread expression in human tissues suggests angiogenin may have biological functions in addition to the promotion of angiogenesis. Recently, its biological activity has been extended to stimulating cell proliferation and promoting cell survival. It is a 17 kDa precursor which is cleaved to generate the 14 kDa mature protein.

### Immunogen information

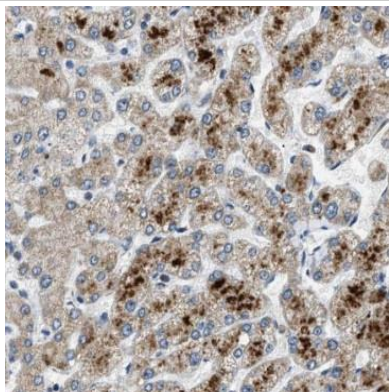
Immunogen:	angiogenin, ribonuclease, RNase A family, 5
Synonyms:	ALS9, ANG, Angiogenin, HEL168, Ribonuclease 5, RNase 5, RNASE4, RNASE5
Observed MW:	17 kDa
Uniprot ID :	P03950

### Application

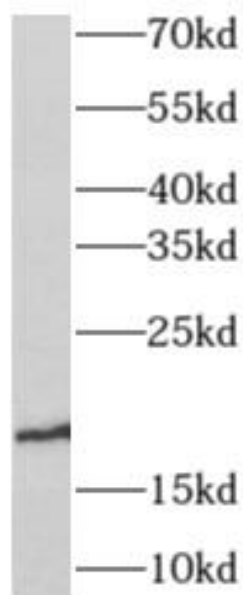
Reactivity:	Human, Mouse
Tested Application:	ELISA, WB, IHC
Recommended dilution:	WB: 1:200-1:2000; IHC: 1:50-1:500
Image:	

**This Antibody is for Research Use Only. Not for Diagnostic Procedures.**

This is a sample Antibody manual only. Always refer to the hard copy manual included in the Antibody for your experiment.



Immunohistochemistry of paraffin-embedded human liver tissue slide using CAF50030(ANG Antibody) at dilution of 1:100



human vein tissue were subjected to SDS PAGE followed by western blot with CAF50030(ANG antibody) at dilution of 1:300