

## anti- ANKRD2 antibody

### Product Information

Catalog No.:	CAF50032
Size:	100µg
Form:	liquid
Purification:	Immunogen affinity purified
Purity:	≥95% as determined by SDS-PAGE
Host:	Rabbit
Clonality:	polyclonal
Clone ID:	None
IsoType:	IgG
Storage:	PBS with 0.02% sodium azide and 50% glycerol pH 7.3, -20°C for 12 months (Avoid repeated freeze / thaw cycles.)

### Background

Functions as a negative regulator of myocyte differentiation. May interact with both sarcoplasmic structural proteins and nuclear proteins to regulate gene expression during muscle development and in response to muscle stress.

### Immunogen information

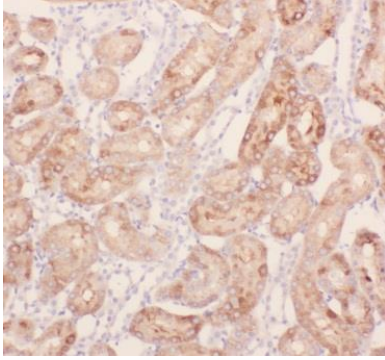
Immunogen:	ankyrin repeat domain 2(stretch responsive muscle)
Synonyms:	Ankyrin repeat domain-containing protein 2,Skeletal muscle ankyrin repeat protein,hArpp,ARPP
Observed MW:	40 kDa
Uniprot ID :	Q9GZV1

### Application

Reactivity:	Human, Mouse, Rat
Tested Application:	ELISA, WB, IHC, IP
Recommended dilution:	WB: 1:500-1:5000; IHC: 1:20-1:200; IP: 1:200-1:2000
Image:	

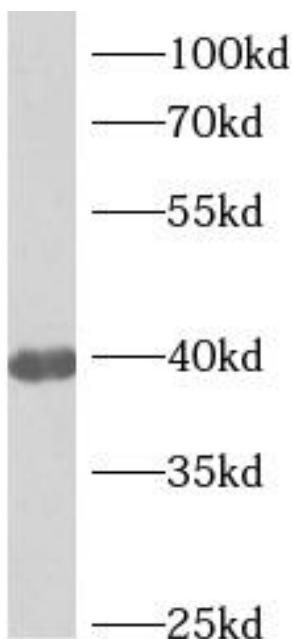
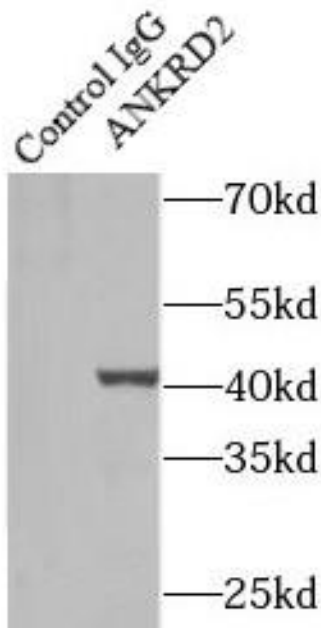
**This Antibody is for Research Use Only. Not for Diagnostic Procedures.**

This is a sample Antibody manual only. Always refer to the hard copy manual included in the Antibody for your experiment.



Immunohistochemistry of paraffin-embedded human kidney using CAF50032(ANKRD2 antibody) at dilution of 1:100

IP Result of anti-ANKRD2 (IP:CAF50032, 4 $\mu$ g; Detection:CAF50032 1:500) with mouse skeletal muscle tissue lysate 3600 $\mu$ g.



human heart tissue were subjected to SDS PAGE followed by western blot with CAF50032(ANKRD2 antibody) at dilution of 1:500

**This Antibody is for Research Use Only. Not for Diagnostic Procedures.**

This is a sample Antibody manual only. Always refer to the hard copy manual included in the Antibody for your experiment.

SAMPLE ONLY

**This Antibody is for Research Use Only. Not for Diagnostic Procedures.**

This is a sample Antibody manual only. Always refer to the hard copy manual included in the Antibody for your experiment.