

anti- Annexin V antibody

Product Information

Catalog No.:	CAF50033
Size:	100µg
Form:	liquid
Purification:	Immunogen affinity purified
Purity:	≥95% as determined by SDS-PAGE
Host:	Rabbit
Clonality:	polyclonal
Clone ID:	None
IsoType:	IgG
Storage:	PBS with 0.02% sodium azide and 50% glycerol pH 7.3, -20°C for 12 months (Avoid repeated freeze / thaw cycles.)

Background

Annexin A5 (ANXA5), is a member of the structurally related family of annexin proteins some of which have been implicated in membrane-related events along exocytotic and endocytotic pathways. Annexin 5 is a phospholipase A2 and protein kinase C inhibitory protein with calcium channel activity and a potential role in cellular signal transduction, inflammation, growth and differentiation. Annexin 5 has also been described as placental anticoagulant protein I, vascular anticoagulant-alpha, endonexin II, lipocortin V, placental protein 4 and anchorin CII.

Immunogen information

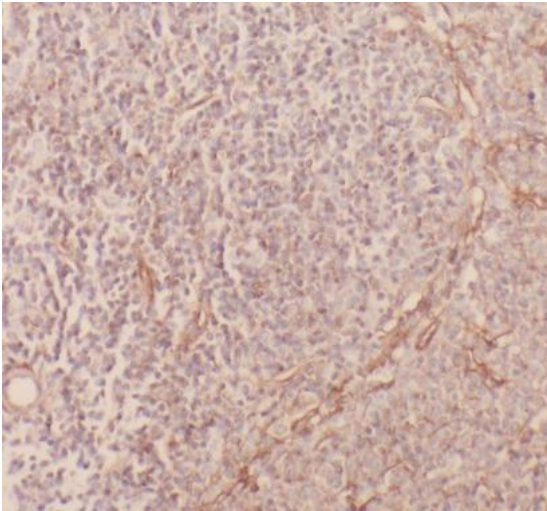
Immunogen:	annexin A5
Synonyms:	Anchorin CII, Annexin 5, annexin A5, Annexin V, ANX5, ANXA5, Calphobindin I, CBP I, Endonexin II, ENX2, Lipocortin V, PAP I, PP4, Thromboplastin inhibitor, VAC alpha, Vascular anticoagulant alpha
Observed MW:	36 kDa
Uniprot ID :	P08758

Application

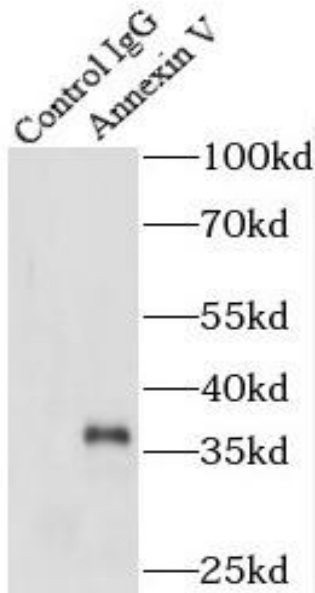
Reactivity:	Human, Mouse
Tested Application:	ELISA, WB, IP, IHC, FC, IF
Recommended dilution:	WB: 1:200-1:2000; IHC: 1:20-1:300; IF: 1:10-1:100
Image:	

This Antibody is for Research Use Only. Not for Diagnostic Procedures.

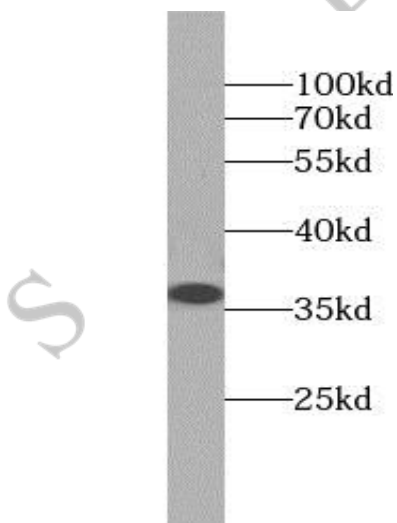
This is a sample Antibody manual only. Always refer to the hard copy manual included in the Antibody for your experiment.



Immunohistochemistry of paraffin-embedded human spleen tissue slide using CAF50033(ANXA5 Antibody) at dilution of 1:200



IP Result of anti-Annexin V (IP:CAF50033, 3ug; Detection:CAF50033 1:500) with HeLa cells lysate 3000ug.



HeLa cells were subjected to SDS PAGE followed by western blot with CAF50033(ANXA5 antibody) at dilution of 1:600

This Antibody is for Research Use Only. Not for Diagnostic Procedures.

This is a sample Antibody manual only. Always refer to the hard copy manual included in the Antibody for your experiment.