

anti- AP2B1 antibody

Product Information

Catalog No.:	CAF50034
Size:	100µg
Form:	liquid
Purification:	Immunogen affinity purified
Purity:	≥95% as determined by SDS-PAGE
Host:	Rabbit
Clonality:	polyclonal
Clone ID:	None
IsoType:	IgG
Storage:	PBS with 0.02% sodium azide and 50% glycerol pH 7.3, -20°C for 12 months (Avoid repeated freeze / thaw cycles.)

Background

The protein encoded by this gene is one of two large chain components of the assembly protein complex 2, which serves to link clathrin to receptors in coated vesicles. The encoded protein is found on the cytoplasmic face of coated vesicles in the plasma membrane. Two transcript variants encoding different isoforms have been found for this gene.

Immunogen information

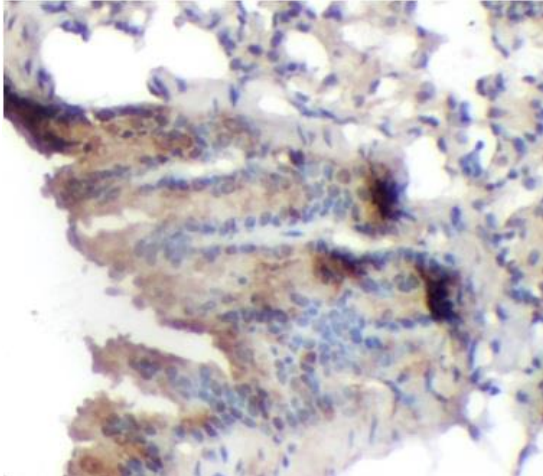
Immunogen:	adaptor-related protein complex 2, beta 1 subunit
Synonyms:	ADTB2, AP 2 complex subunit beta, AP105B, AP2 BETA, AP2B1, Beta 2 adaptin, Beta adaptin, CLAPB1, DKFZp781K0743
Observed MW:	105 kDa
Uniprot ID :	P63010

Application

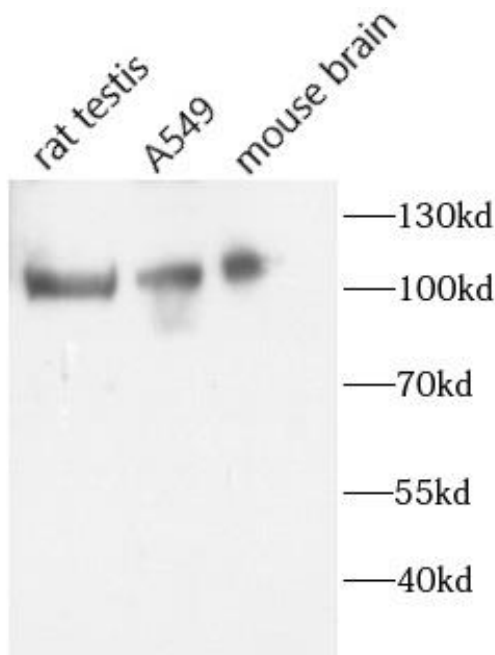
Reactivity:	Human, Mouse, Rat
Tested Application:	ELISA, WB, IHC
Recommended dilution:	WB: 1:500 - 1:2000; IHC: 1:50 - 1:200
Image:	

This Antibody is for Research Use Only. Not for Diagnostic Procedures.

This is a sample Antibody manual only. Always refer to the hard copy manual included in the Antibody for your experiment.



Immunohistochemistry of paraffin-embedded mouse lung using CAF50034(AP2B1 antibody) at dilution of 1:50



various lysates were subjected to SDS PAGE followed by western blot with CAF50034(AP2B1 Antibody) at dilution of 1:1000

This Antibody is for Research Use Only. Not for Diagnostic Procedures.

This is a sample Antibody manual only. Always refer to the hard copy manual included in the Antibody for your experiment.