

anti- APH1A antibody

Product Information

Catalog No.:	CAF50037
Size:	100µg
Form:	liquid
Purification:	Immunogen affinity purified
Purity:	≥95% as determined by SDS-PAGE
Host:	Rabbit
Clonality:	polyclonal
Clone ID:	None
IsoType:	IgG
Storage:	PBS with 0.02% sodium azide and 50% glycerol pH 7.3, -20°C for 12 months (Avoid repeated freeze / thaw cycles.)

Background

Essential subunit of the gamma-secretase complex, an endoprotease complex that catalyzes the intramembrane cleavage of integral proteins such as Notch receptors and APP(beta-amyloid precursor protein). It probably represents a stabilizing cofactor for the presenilin homodimer that promotes the formation of a stable complex.

Immunogen information

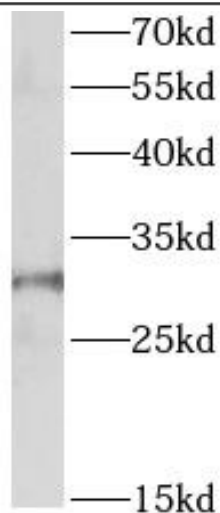
Immunogen:	anterior pharynx defective 1 homolog A
Synonyms:	APH 1A, Aph 1alpha, APH1A, CGI 78, Gamma secretase subunit APH 1A, PSF, UNQ579/PRO1141
Observed MW:	30 kDa
Uniprot ID :	Q96BI3

Application

Reactivity:	Human, Mouse, Rat
Tested Application:	ELISA, WB
Recommended dilution:WB:	1:500 - 1:1000
Image:	

This Antibody is for Research Use Only. Not for Diagnostic Procedures.

This is a sample Antibody manual only. Always refer to the hard copy manual included in the Antibody for your experiment.



HeLa cells were subjected to SDS PAGE followed by western blot with CAF50037 (APH1A antibody) at dilution of 1:500

ONLY

SAMPLE

This Antibody is for Research Use Only. Not for Diagnostic Procedures.

This is a sample Antibody manual only. Always refer to the hard copy manual included in the Antibody for your experiment.