

anti- APPL1 antibody

Product Information

Catalog No.:	CAF50038
Size:	100µg
Form:	liquid
Purification:	Immunogen affinity purified
Purity:	≥95% as determined by SDS-PAGE
Host:	Rabbit
Clonality:	polyclonal
Clone ID:	None
IsoType:	IgG
Storage:	PBS with 0.02% sodium azide and 50% glycerol pH 7.3, -20°C for 12 months (Avoid repeated freeze / thaw cycles.)

Background

Adapter protein that interacts with proteins involved in different cellular signaling pathways. Required for the regulation of cell proliferation in response to extracellular signals from an early endosomal compartment. Links Rab5 to nuclear signal transduction. Involved in the regulation of the insulin receptor signaling pathway.

Immunogen information

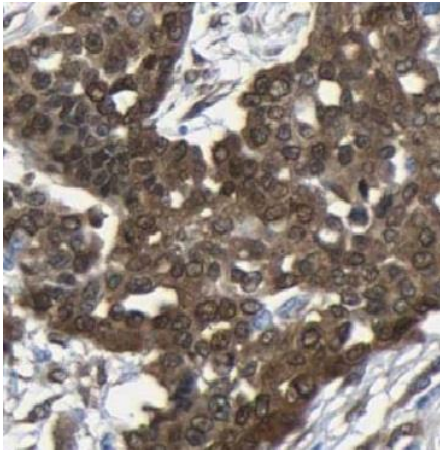
Immunogen:	adaptor protein, phosphotyrosine interaction, PH domain and leucine zipper containing 1
Synonyms:	APPL, DIP13A, KIAA1428, APPL1
Observed MW:	80kd
Uniprot ID :	Q9UKG1

Application

Reactivity:	Human, Mouse, Rat
Tested Application:	ELISA, WB, IHC, IP
Recommended dilution:	WB: 1:2000 - 1:5000; IHC: 1:20 - 1:200; IP: 1:500 - 1:2000
Image:	

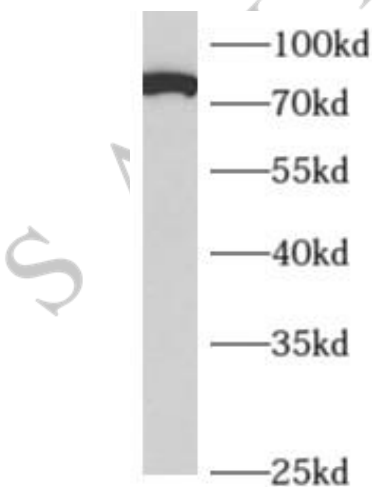
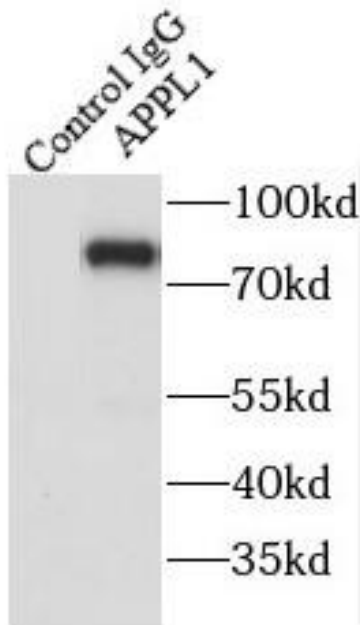
This Antibody is for Research Use Only. Not for Diagnostic Procedures.

This is a sample Antibody manual only. Always refer to the hard copy manual included in the Antibody for your experiment.



Immunohistochemistry of paraffin-embedded human ovary tumor using CAF50038(APPL1 antibody) at dilution of 1:50

IP Result of anti-APPL1 (IP:CAF50038, 4ug; Detection:CAF50038 1:500) with mouse brain tissue lysate 4000ug.



human brain tissue were subjected to SDS PAGE followed by western blot with CAF50038(APPL1 antibody) at dilution of 1:500

This Antibody is for Research Use Only. Not for Diagnostic Procedures.

This is a sample Antibody manual only. Always refer to the hard copy manual included in the Antibody for your experiment.