

anti- ARHGEF1 antibody

Product Information

Catalog No.:	CAF50039
Size:	100µg
Form:	liquid
Purification:	Immunogen affinity purified
Purity:	≥95% as determined by SDS-PAGE
Host:	Rabbit
Clonality:	polyclonal
Clone ID:	None
IsoType:	IgG
Storage:	PBS with 0.02% sodium azide and 50% glycerol pH 7.3, -20°C for 12 months (Avoid repeated freeze / thaw cycles.)

Background

Seems to play a role in the regulation of RhoA GTPase by guanine nucleotide-binding alpha-12(GNA12) and alpha-13(GNA13) subunits. Acts as GTPase-activating protein(GAP) for GNA12 and GNA13, and as guanine nucleotide exchange factor(GEF) for RhoA GTPase. Activated G alpha 13/GNA13 stimulates the RhoGEF activity through interaction with the RGS-like domain. This GEF activity is inhibited by binding to activated GNA12. Mediates angiotensin-2-induced RhoA activation.

Immunogen information

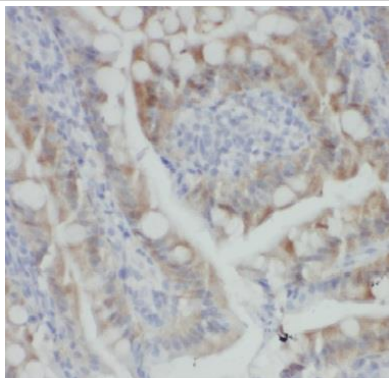
Immunogen:	Rho guanine nucleotide exchange factor(GEF) 1
Synonyms:	ARHGEF1, GEF1, LBCL2, LSC, P115 RHOGEF, p115RhoGEF, SUB1.5
Observed MW:	102-110 kDa
Uniprot ID :	Q92888

Application

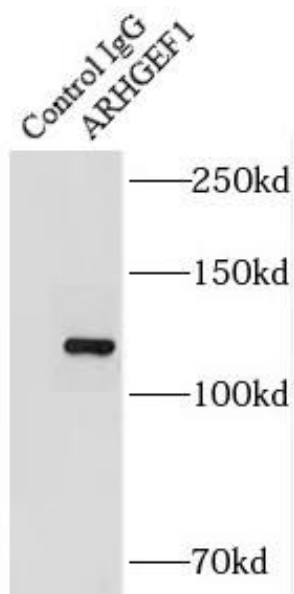
Reactivity:	Human, Mouse
Tested Application:	ELISA, IHC, WB, IP
Recommended dilution:	WB: 1:500-1:2000; IP: 1:200-1:1000; IHC: 1:20-1:200
Image:	

This Antibody is for Research Use Only. Not for Diagnostic Procedures.

This is a sample Antibody manual only. Always refer to the hard copy manual included in the Antibody for your experiment.



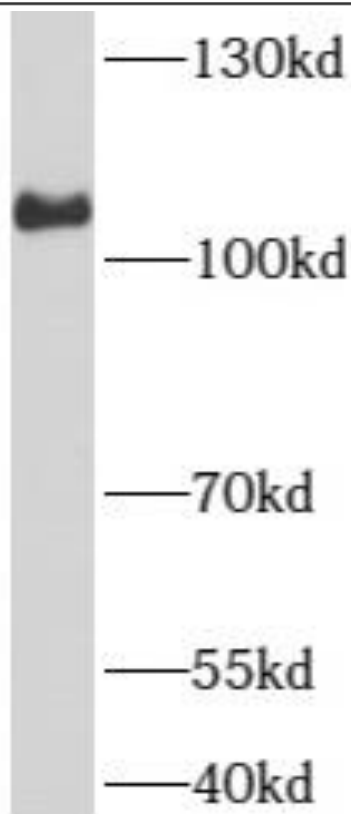
Immunohistochemistry of paraffin-embedded human colon using CAF50039(ARHGEF1 antibody) at dilution of 1:50



IP Result of anti-ARHGEF1 (IP:CAF50039, 4ug; Detection:CAF50039 1:1000) with HEK-293 cells lysate 2800ug.

This Antibody is for Research Use Only. Not for Diagnostic Procedures.

This is a sample Antibody manual only. Always refer to the hard copy manual included in the Antibody for your experiment.



HEK-293 cells were subjected to SDS PAGE followed by western blot with CAF50039 (ARHGEF1 antibody) at dilution of 1:1000

ONLY

SAMPLE

This Antibody is for Research Use Only. Not for Diagnostic Procedures.

This is a sample Antibody manual only. Always refer to the hard copy manual included in the Antibody for your experiment.