

anti- ASGR1 antibody

Product Information

Catalog No.:	CAF50041
Size:	100µg
Form:	liquid
Purification:	Immunogen affinity purified
Purity:	≥95% as determined by SDS-PAGE
Host:	Rabbit
Clonality:	polyclonal
Clone ID:	None
IsoType:	IgG
Storage:	PBS with 0.02% sodium azide and 50% glycerol pH 7.3, -20°C for 12 months (Avoid repeated freeze / thaw cycles.)

Background

This gene encodes a subunit of the asialoglycoprotein receptor. This receptor is a transmembrane protein that plays a critical role in serum glycoprotein homeostasis by mediating the endocytosis and lysosomal degradation of glycoproteins with exposed terminal galactose or N-acetylgalactosamine residues. The asialoglycoprotein receptor may facilitate hepatic infection by multiple viruses including hepatitis B, and is also a target for liver-specific drug delivery. The asialoglycoprotein receptor is a hetero-oligomeric protein composed of major and minor subunits, which are encoded by different genes. The protein encoded by this gene is the more abundant major subunit. Alternatively spliced transcript variants encoding multiple isoforms have been observed for this gene.

Immunogen information

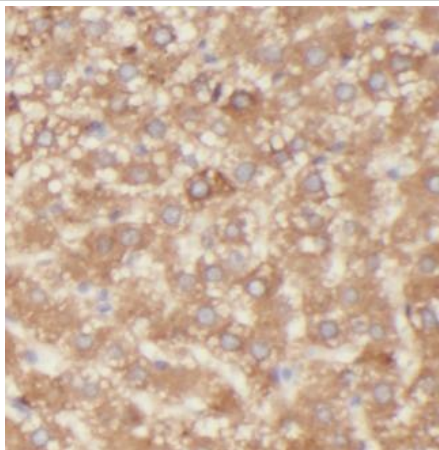
Immunogen:	asialoglycoprotein receptor 1
Synonyms:	ASGP R 1, ASGPR, ASGPR 1, Asgpr1, ASGR1, asialoglycoprotein receptor 1, CLEC4H1, Hepatic lectin H1, HL 1, Hs.12056
Observed MW:	40 kDa
Uniprot ID :	P07306

Application

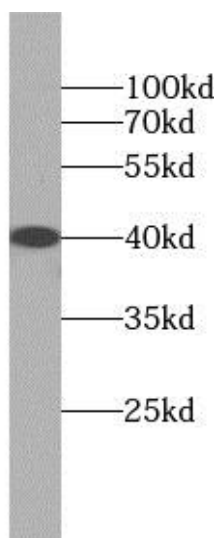
Reactivity:	Human, Mouse, Rat
Tested Application:	ELISA, WB, IHC
Recommended dilution:	WB: 1:1000 - 1:4000; IHC: 1:50 - 1:200
Image:	

This Antibody is for Research Use Only. Not for Diagnostic Procedures.

This is a sample Antibody manual only. Always refer to the hard copy manual included in the Antibody for your experiment.



Immunohistochemistry of paraffin-embedded human liver tissue slide using CAF50041(ASGR1 Antibody) at dilution of 1:100



human liver tissue were subjected to SDS PAGE followed by western blot with CAF50041(ASGR1 antibody) at dilution of 1:1000