

anti- BTNL2 antibody

Product Information

Catalog No.:	CAF50055
Size:	100µg
Form:	liquid
Purification:	Immunogen affinity purified
Purity:	≥95% as determined by SDS-PAGE
Host:	Rabbit
Clonality:	polyclonal
Clone ID:	None
IsoType:	IgG
Storage:	PBS with 0.02% sodium azide and 50% glycerol pH 7.3, -20°C for 12 months (Avoid repeated freeze / thaw cycles.)

Background

Negative regulator of T-cell proliferation.

Immunogen information

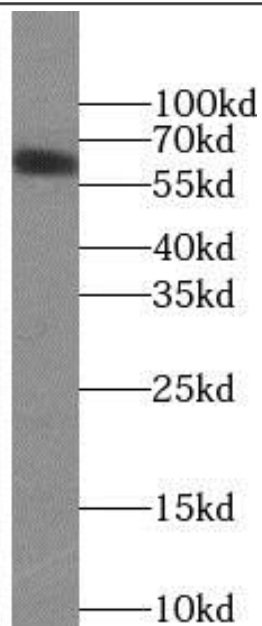
Immunogen:	butyrophilin-like 2
Synonyms:	BTL II, BTNL2, Butyrophilin like protein 2, HSBLMHC1, SS2
Observed MW:	65 kDa
Uniprot ID :	Q9UIR0

Application

Reactivity:	Human, Mouse
Tested Application:	ELISA, WB
Recommended dilution:WB:	1:500-1:1000
Image:	

This Antibody is for Research Use Only. Not for Diagnostic Procedures.

This is a sample Antibody manual only. Always refer to the hard copy manual included in the Antibody for your experiment.



HEK-293 cells were subjected to SDS PAGE followed by western blot with CAF50055(BTNL2 Antibody) at dilution of 1:600

ONLY

SAMPLE

This Antibody is for Research Use Only. Not for Diagnostic Procedures.

This is a sample Antibody manual only. Always refer to the hard copy manual included in the Antibody for your experiment.