

anti- cleaved Caspase 9 antibody

Product Information

Catalog No.:	CAF50061
Size:	100µg
Form:	liquid
Purification:	Immunogen affinity purified
Purity:	≥95% as determined by SDS-PAGE
Host:	Rabbit
Clonality:	polyclonal
IsoType:	IgG
Storage:	PBS with 0.02% sodium azide and 50% glycerol pH 7.3, -20°C for 12 months (Avoid repeated freeze / thaw cycles.)

Background

This antibody can recognize the pre- and cleaved- caspase 9.

Immunogen information

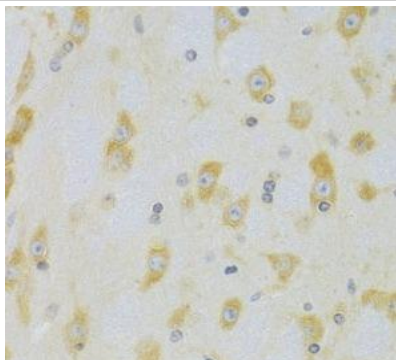
Immunogen:	caspase 9, apoptosis-related cysteine peptidase
Synonyms:	APAF 3, APAF3, Apoptotic protease Mch 6, CASP 9, CASP9, Caspase 9, CASPASE 9c, Caspase9, Caspase-9, ICE LAP6, ICE like apoptotic protease 6, MCH6
Observed MW:	17kDa/36kDa/46kDa
Uniprot ID :	P55211

Application

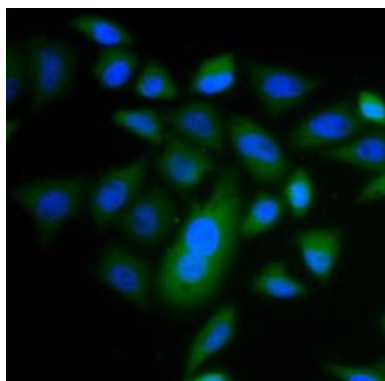
Reactivity:	Human, Mouse, Rat
Tested Application:	ELISA, WB, IHC, IF
Recommended dilution:	WB: 1:200 - 1:200; IHC: 1:50 - 1:200; IF: 1:50 - 1:100
Image:	

This Antibody is for Research Use Only. Not for Diagnostic Procedures.

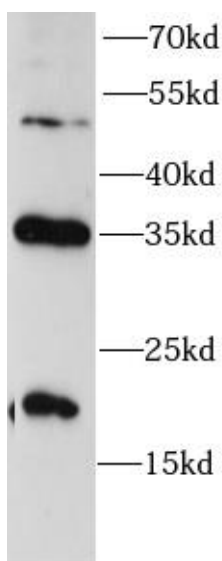
This is a sample Antibody manual only. Always refer to the hard copy manual included in the Antibody for your experiment.



Immunohistochemistry of paraffin-embedded rat brain using CAF50061 at dilution of 1:100



Immunofluorescence analysis of (-20°C Ethanol) fixed A549 cells using CAF50061.



Jurkat cells were subjected to SDS PAGE followed by western blot with CAF50061 at dilution of 1:300

This Antibody is for Research Use Only. Not for Diagnostic Procedures.

This is a sample Antibody manual only. Always refer to the hard copy manual included in the Antibody for your experiment.