

anti- CD31 antibody

Product Information

Catalog No.:	CAF50065
Size:	100µg
Form:	liquid
Purification:	Immunogen affinity purified
Purity:	≥95% as determined by SDS-PAGE
Host:	Rabbit
Clonality:	polyclonal
Clone ID:	None
IsoType:	IgG
Storage:	PBS with 0.02% sodium azide and 50% glycerol pH 7.3, -20°C for 12 months (Avoid repeated freeze / thaw cycles.)

Background

The protein encoded by this gene is found on the surface of platelets, monocytes, neutrophils, and some types of T-cells, and makes up a large portion of endothelial cell intercellular junctions. The encoded protein is a member of the immunoglobulin superfamily and is likely involved in leukocyte migration, angiogenesis, and integrin activation.

Immunogen information

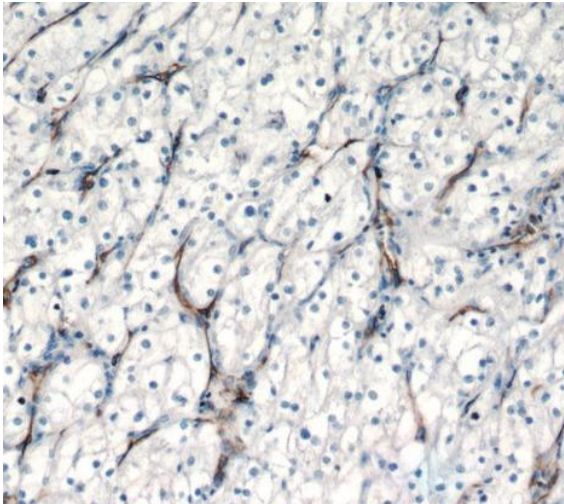
Immunogen:	platelet/endothelial cell adhesion molecule
Synonyms:	CD31, EndoCAM, FLJ58394, GPIIA, PECA1, PECAM 1, PECAM1, VEC marker
Observed MW:	130 kDa
Uniprot ID :	P16284

Application

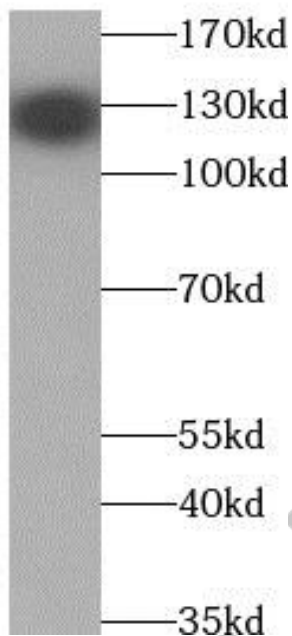
Reactivity:	Human, Mouse, Rat
Tested Application:	ELISA, IHC, WB
Recommended dilution:	WB: 1:500 - 1:2000; IHC: 1:50 - 1:200
Image:	

This Antibody is for Research Use Only. Not for Diagnostic Procedures.

This is a sample Antibody manual only. Always refer to the hard copy manual included in the Antibody for your experiment.



Immunohistochemistry of paraffin-embedded human renal cell carcinoma tissue slide using CAF50065(CD31 Antibody) at dilution of 1:100



Jurkat cells were subjected to SDS PAGE followed by western blot with CAF50065(CD31 Antibody) at dilution of 1:1000

This Antibody is for Research Use Only. Not for Diagnostic Procedures.

This is a sample Antibody manual only. Always refer to the hard copy manual included in the Antibody for your experiment.