

## anti- CD63 antibody

### Product Information

Catalog No.:	CAF50067
Size:	100µg
Form:	liquid
Purification:	Immunogen affinity purified
Purity:	≥95% as determined by SDS-PAGE
Host:	Rabbit
Clonality:	polyclonal
Clone ID:	None
IsoType:	IgG
Storage:	PBS with 0.02% sodium azide and 50% glycerol pH 7.3, -20°C for 12 months (Avoid repeated freeze / thaw cycles.)

### Background

The protein encoded by this gene is a member of the transmembrane 4 superfamily, also known as the tetraspanin family. Most of these members are cell-surface proteins that are characterized by the presence of four hydrophobic domains. The proteins mediate signal transduction events that play a role in the regulation of cell development, activation, growth and motility. The encoded protein is a cell surface glycoprotein that is known to complex with integrins. It may function as a blood platelet activation marker. Deficiency of this protein is associated with Hermansky-Pudlak syndrome. Also this gene has been associated with tumor progression. Alternative splicing results in multiple transcript variants encoding different protein isoforms.

### Immunogen information

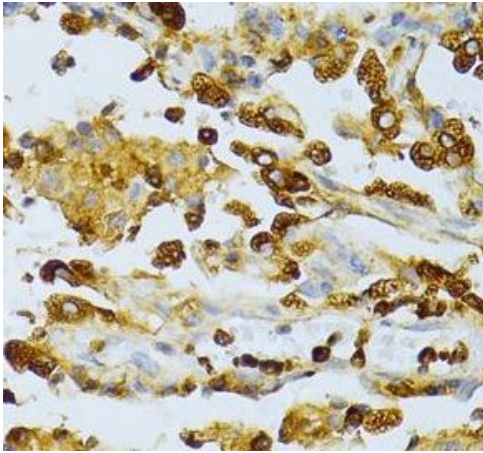
Immunogen:	CD63 molecule
Synonyms:	MLA1, TSPAN30
Observed MW:	53 kDa
Uniprot ID :	P08962

### Application

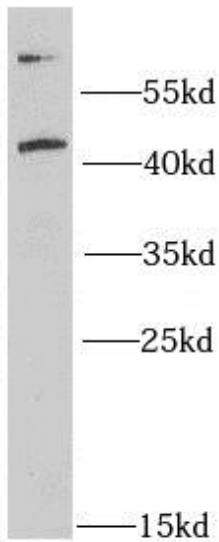
Reactivity:	Human, Mouse, Rat
Tested Application:	ELISA, IHC, WB
Recommended dilution:	WB: 1:500 - 1:2000; IHC: 1:50 - 1:200
Image:	

**This Antibody is for Research Use Only. Not for Diagnostic Procedures.**

This is a sample Antibody manual only. Always refer to the hard copy manual included in the Antibody for your experiment.



Immunohistochemistry of paraffin-embedded human lung cancer using CAF50067( CD63 Antibody) at dilution of 1:100 heat mediated antigen retrieved with Tris-EDTA buffer(pH9).



Mouse spleen were subjected to SDS PAGE followed by western blot with CAF50067( CD63 Antibody) at dilution of 1:1000

**This Antibody is for Research Use Only. Not for Diagnostic Procedures.**

This is a sample Antibody manual only. Always refer to the hard copy manual included in the Antibody for your experiment.