

anti- Clusterin antibody

Product Information

Catalog No.:	CAF50070
Size:	100µg
Form:	liquid
Purification:	Immunogen affinity purified
Purity:	≥95% as determined by SDS-PAGE
Host:	Rabbit
Clonality:	polyclonal
Clone ID:	None
IsoType:	IgG
Storage:	PBS with 0.02% sodium azide and 50% glycerol pH 7.3, -20°C for 12 months (Avoid repeated freeze / thaw cycles.)

Background

The protein encoded by this gene is a secreted chaperone that can under some stress conditions also be found in the cell cytosol. It has been suggested to be involved in several basic biological events such as cell death, tumor progression, and neurodegenerative disorders. Alternate splicing results in both coding and non-coding variants.

Immunogen information

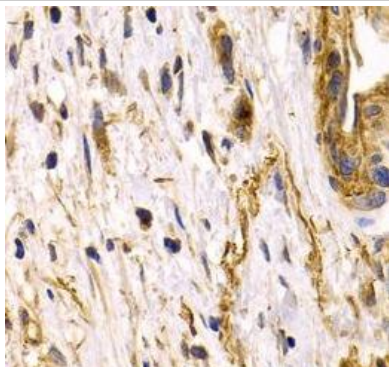
Immunogen:	clusterin
Synonyms:	AAG4, Apo J, APOJ, ApoJalpha, ApoJbeta, Apolipoprotein J, CLI, CLU, clusterin, Complement cytolysis inhibitor, Ku70 binding protein 1, KUB1, NA1/NA2, SGP 2, SGP2, SP 40, TRPM 2, TRPM2
Observed MW:	40 kDa
Uniprot ID :	P10909

Application

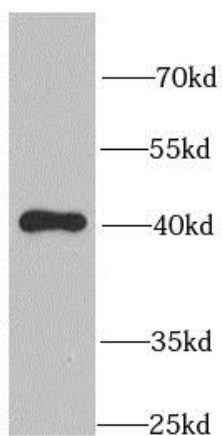
Reactivity:	Human, Mouse
Tested Application:	ELISA, WB, IHC
Recommended dilution:	WB: 1:500 - 1:2000; IHC: 1:50 - 1:200
Image:	

This Antibody is for Research Use Only. Not for Diagnostic Procedures.

This is a sample Antibody manual only. Always refer to the hard copy manual included in the Antibody for your experiment.



Immunohistochemistry of paraffin-embedded human gastric cancer using CAF50070(CLU Antibody) at dilution of 1:200



Y79 cells were subjected to SDS PAGE followed by western blot with CAF50070(CLU antibody) at dilution of 1:1000

ONLY

SAMPLE

This Antibody is for Research Use Only. Not for Diagnostic Procedures.

This is a sample Antibody manual only. Always refer to the hard copy manual included in the Antibody for your experiment.