

## anti- Cofilin antibody

### Product Information

Catalog No.:	CAF50072
Size:	100µg
Form:	liquid
Purification:	Immunogen affinity purified
Purity:	≥95% as determined by SDS-PAGE
Host:	Rabbit
Clonality:	polyclonal
Clone ID:	None
IsoType:	IgG
Storage:	PBS with 0.02% sodium azide and 50% glycerol pH 7.3, -20°C for 12 months (Avoid repeated freeze / thaw cycles.)

### Background

None

### Immunogen information

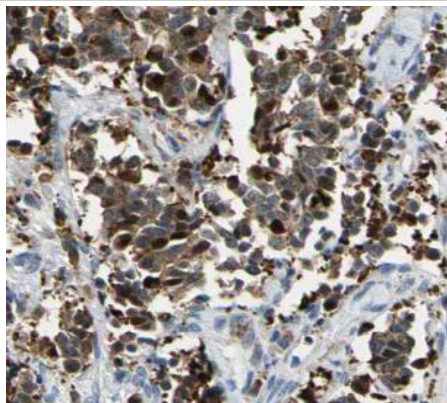
Immunogen:	cofilin 1(non-muscle)
Synonyms:	18 kDa phosphoprotein, CFL, CFL1, Cofilin 1, cofilin 1 (non muscle), Cofilin, non muscle isoform, p18
Observed MW:	18 kDa
Uniprot ID :	P23528

### Application

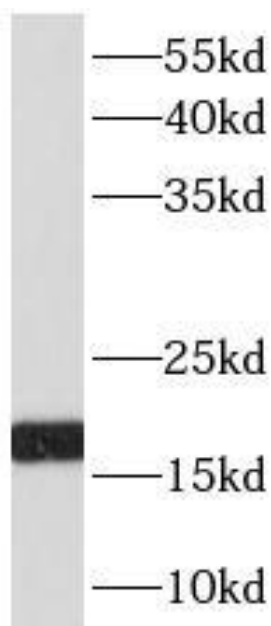
Reactivity:	Human, Mouse, Rat
Tested Application:	ELISA, WB, IHC
Recommended dilution:	WB: 1:500 - 1:2000; IHC: 1:50 - 1:200; IF: 1:50 - 1:200
Image:	

**This Antibody is for Research Use Only. Not for Diagnostic Procedures.**

This is a sample Antibody manual only. Always refer to the hard copy manual included in the Antibody for your experiment.



Immunohistochemistry of paraffin-embedded human cervical cancer using CAF50072(CFL1 antibody) at dilution of 1:50



mouse brain tissue were subjected to SDS PAGE followed by western blot with CAF50072(CFL1 antibody) at dilution of 1:1000

**This Antibody is for Research Use Only. Not for Diagnostic Procedures.**

This is a sample Antibody manual only. Always refer to the hard copy manual included in the Antibody for your experiment.