

anti- CXCL13 antibody

Product Information

Catalog No.:	CAF50079
Size:	100µg
Form:	liquid
Purification:	Immunogen affinity purified
Purity:	≥95% as determined by SDS-PAGE
Host:	Rabbit
Clonality:	polyclonal
IsoType:	IgG
Storage:	PBS with 0.02% sodium azide and 50% glycerol pH 7.3, -20°C for 12 months (Avoid repeated freeze / thaw cycles.)

Background

Chemotactic for B-lymphocytes but not for T-lymphocytes, monocytes and neutrophils. Does not induce calcium release in B-lymphocytes. Binds to BLR1/CXCR5.

Immunogen information

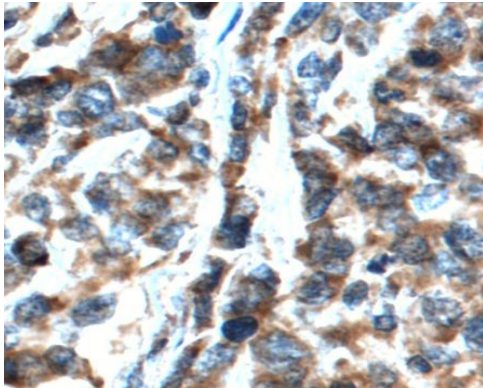
Immunogen:	chemokine(C-X-C motif) ligand 13
Synonyms:	ANGIE, ANGIE2, B cell attracting chemokine 1, B lymphocyte chemoattractant, BLC, BLR1L, C X C motif chemokine 13, CXC chemokine BLC, CXCL13, SCYB13, Small inducible cytokine B13
Observed MW:	10 kDa
Uniprot ID :	O43927

Application

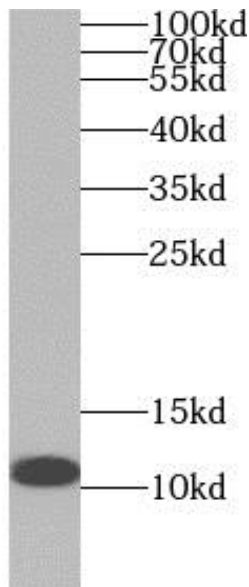
Reactivity:	Human, Mouse, Rat
Tested Application:	ELISA, WB, IHC
Recommended dilution:	WB: 1:200-1:2000; IHC: 1:50-1:500
Image:	

This Antibody is for Research Use Only. Not for Diagnostic Procedures.

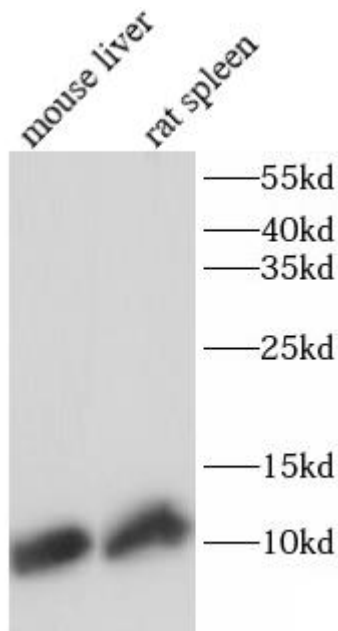
This is a sample Antibody manual only. Always refer to the hard copy manual included in the Antibody for your experiment.



Immunohistochemistry of paraffin-embedded human lymphoma tissue slide using CAF50079(CXCL13 Antibody) at dilution of 1:200 heat mediated antigen retrieved with Tris-EDTA buffer(pH9).



human placenta tissue were subjected to SDS PAGE followed by western blot with CAF50079(CXCL13 antibody) at dilution of 1:200



Mouse liver and rat spleen tissues were subjected to SDS PAGE followed by western blot with CAF50079(CXCL13 antibody) at dilution of 1:1000

This Antibody is for Research Use Only. Not for Diagnostic Procedures.

This is a sample Antibody manual only. Always refer to the hard copy manual included in the Antibody for your experiment.