

anti- CYP3A4 antibody

Product Information

Catalog No.:	CAF50081
Size:	100µg
Form:	liquid
Purification:	Immunogen affinity purified
Purity:	≥95% as determined by SDS-PAGE
Host:	Rabbit
Clonality:	polyclonal
Clone ID:	None
IsoType:	IgG
Storage:	PBS with 0.02% sodium azide and 50% glycerol pH 7.3, -20°C for 12 months (Avoid repeated freeze / thaw cycles.)

Background

This gene encodes a member of the cytochrome P450 superfamily of enzymes. The cytochrome P450 proteins are monooxygenases that catalyze many reactions involved in drug metabolism and synthesis of cholesterol, steroids and other lipids. This protein localizes to the endoplasmic reticulum and its expression is induced by glucocorticoids and some pharmacological agents. This enzyme is involved in the metabolism of approximately half the drugs in use today, including acetaminophen, codeine, cyclosporin A, diazepam and erythromycin. The enzyme also metabolizes some steroids and carcinogens. This gene is part of a cluster of cytochrome P450 genes on chromosome 7q21.1. Previously another CYP3A gene, CYP3A3, was thought to exist; however, it is now thought that this sequence represents a transcript variant of CYP3A4. Alternatively spliced transcript variants encoding different isoforms have been identified.

Immunogen information

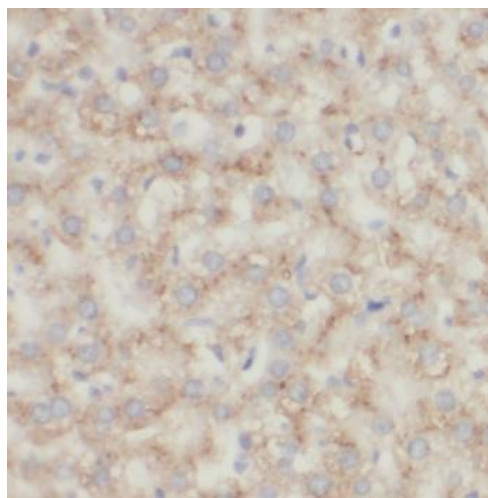
Immunogen:	cytochrome P450, family 3, subfamily A, polypeptide 4
Synonyms:	CYP3A4, CP33, CP34, CYP3A, CYP3A3, CYP3A4, CYP3A5, CYP3A6, CYP3A7, CYP3A8, CYP3A9, CYP3A10, CYP3A11, CYP3A12, CYP3A13, CYP3A14, CYP3A15, CYP3A16, CYP3A17, CYP3A18, CYP3A19, CYP3A20, CYP3A21, CYP3A22, CYP3A23, CYP3A24, CYP3A25, CYP3A26, CYP3A27, CYP3A28, CYP3A29, CYP3A30, CYP3A31, CYP3A32, CYP3A33, CYP3A34, CYP3A35, CYP3A36, CYP3A37, CYP3A38, CYP3A39, CYP3A40, CYP3A41, CYP3A42, CYP3A43, CYP3A44, CYP3A45, CYP3A46, CYP3A47, CYP3A48, CYP3A49, CYP3A50, CYP3A51, CYP3A52, CYP3A53, CYP3A54, CYP3A55, CYP3A56, CYP3A57, CYP3A58, CYP3A59, CYP3A60, CYP3A61, CYP3A62, CYP3A63, CYP3A64, CYP3A65, CYP3A66, CYP3A67, CYP3A68, CYP3A69, CYP3A70, CYP3A71, CYP3A72, CYP3A73, CYP3A74, CYP3A75, CYP3A76, CYP3A77, CYP3A78, CYP3A79, CYP3A80, CYP3A81, CYP3A82, CYP3A83, CYP3A84, CYP3A85, CYP3A86, CYP3A87, CYP3A88, CYP3A89, CYP3A90, CYP3A91, CYP3A92, CYP3A93, CYP3A94, CYP3A95, CYP3A96, CYP3A97, CYP3A98, CYP3A99, CYP3A100
Observed MW:	60 kDa
Uniprot ID :	P08684

Application

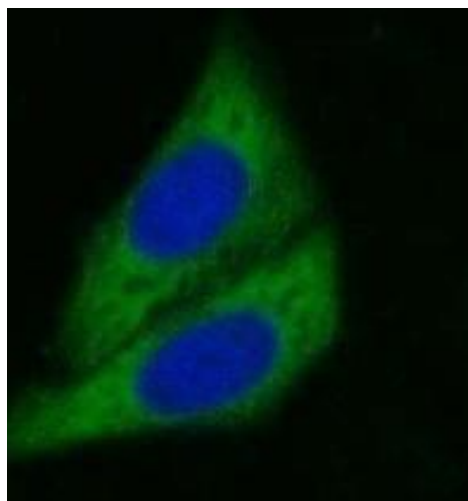
Reactivity:	Human, Mouse, Rat
Tested Application:	ELISA, WB, IHC, IF
Recommended dilution:	WB: 1:500 - 1:2000; IHC: 1:20 - 1:200; IF: 1:20 - 1:200
Image:	

This Antibody is for Research Use Only. Not for Diagnostic Procedures.

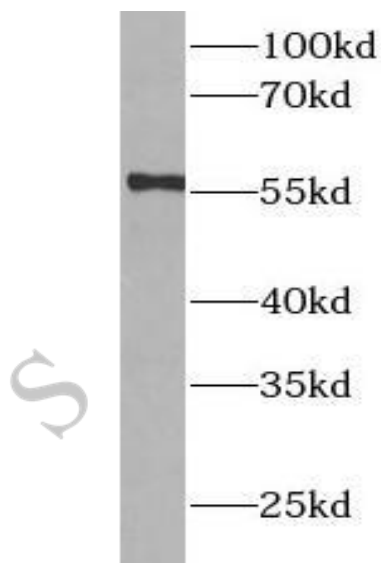
This is a sample Antibody manual only. Always refer to the hard copy manual included in the Antibody for your experiment.



Immunohistochemistry of paraffin-embedded human liver using CAF50081(CYP3A4 antibody) at dilution of 1:50



Immunofluorescent analysis of (-20°C Ethanol) fixed HepG2 cells using CAF50081 (CYP3A4 antibody) at dilution of 1:50 and Alexa Fluor 488-conjugated Goat Anti-Rabbit IgG(H+L)



rat liver tissue were subjected to SDS PAGE followed by western blot with CAF50081(CYP3A4 antibody) at dilution of 1:1000

This Antibody is for Research Use Only. Not for Diagnostic Procedures.

This is a sample Antibody manual only. Always refer to the hard copy manual included in the Antibody for your experiment.