

## anti- DCX antibody

### Product Information

|               |   |
|---------------|---|
| Catalog No.:  | CAF50088  |
| Size:         | 100µg   |
| Form:         | liquid  |
| Purification: | Immunogen affinity purified   |
| Purity:       | ≥95% as determined by SDS-PAGE  |
| Host:         | Rabbit  |
| Clonality:    | polyclonal  |
| IsoType:      | IgG   |
| Storage:      | PBS with 0.02% sodium azide and 50% glycerol pH 7.3, -20°C for 12 months (Avoid repeated freeze / thaw cycles.) |

### Background

Microtubule-associated protein required for initial steps of neuronal dispersion and cortex lamination during cerebral cortex development. May act by competing with the putative neuronal protein kinase DCLK1 in binding to a target protein. May in that way participate in a signaling pathway that is crucial for neuronal interaction before and during migration, possibly as part of a calcium ion-dependent signal transduction pathway. May be part with PFAFH1B1/LIS-1 of overlapping, but distinct, signaling pathways that promote neuronal migration.

### Immunogen information

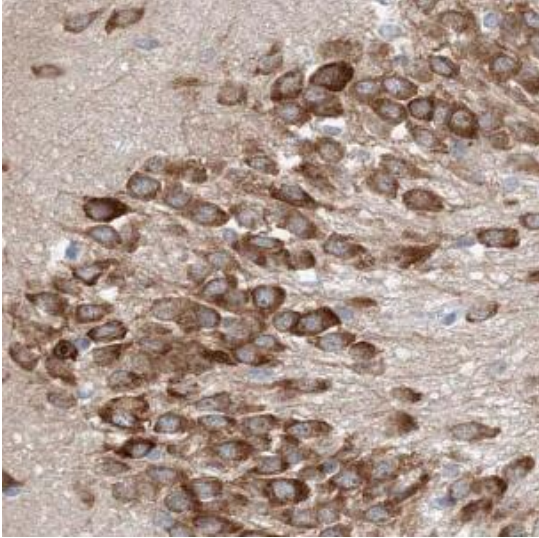
|              |  |
|--------------|--|
| Immunogen:   | doublecortin   |
| Synonyms:    | DBCN, DC, DCX, doublecortin, Dublin, Lis X, Lissencephalin X, LISX, SCLH, XLIS |
| Observed MW: | 40 kDa   |
| Uniprot ID : | O43602   |

### Application

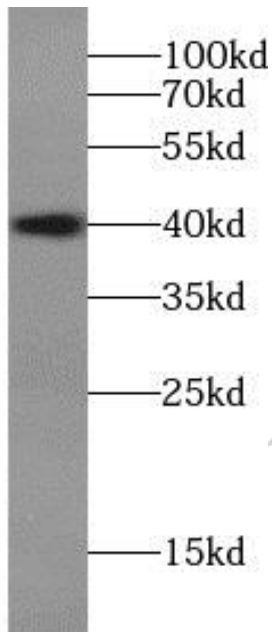
|                       |   |
|-----------------------|---|
| Reactivity:           | Human, Mouse, Rat                                 |
| Tested Application:   | ELISA, WB, IHC, IF                                |
| Recommended dilution: | WB: 1:500-1:2000; IHC: 1:20-1:200; IF: 1:20-1:200 |
| Image:                |   |

**This Antibody is for Research Use Only. Not for Diagnostic Procedures.**

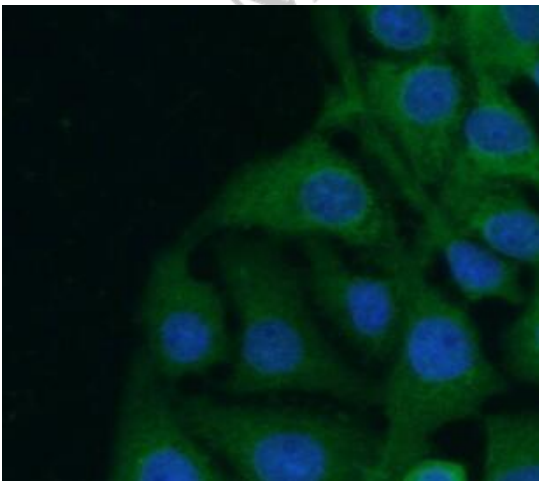
This is a sample Antibody manual only. Always refer to the hard copy manual included in the Antibody for your experiment.



Immunohistochemistry of paraffin-embedded human testis using CAF50088(DCX antibody) at dilution of 1:100



human brain tissue were subjected to SDS PAGE followed by western blot with CAF50088(DCX antibody) at dilution of 1:600



Immunofluorescent analysis of SH-SY5Y cells using CAF50088(DCX antibody) at dilution of 1:50 and Alexa Fluor 488-conjugated Goat Anti-Rabbit IgG(H+L)

**This Antibody is for Research Use Only. Not for Diagnostic Procedures.**

This is a sample Antibody manual only. Always refer to the hard copy manual included in the Antibody for your experiment.

SAMPLE ONLY

**This Antibody is for Research Use Only. Not for Diagnostic Procedures.**

This is a sample Antibody manual only. Always refer to the hard copy manual included in the Antibody for your experiment.