

anti- Desmin antibody

Product Information

Catalog No.:	CAF50090
Size:	100µg
Form:	liquid
Purification:	Immunogen affinity purified
Purity:	≥95% as determined by SDS-PAGE
Host:	Rabbit
Clonality:	polyclonal
Clone ID:	None
IsoType:	IgG
Storage:	PBS with 0.02% sodium azide and 50% glycerol pH 7.3, -20°C for 12 months (Avoid repeated freeze / thaw cycles.)

Background

None

Immunogen information

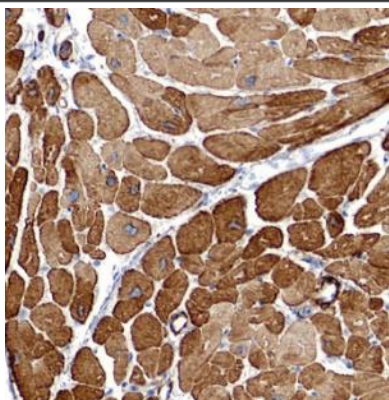
Immunogen:	desmin
Synonyms:	CMD1I, CSM1, CSM2, DES, desmin, FLJ12025, FLJ39719, FLJ41013, FLJ41793
Observed MW:	50-55 kDa
Uniprot ID :	P17661

Application

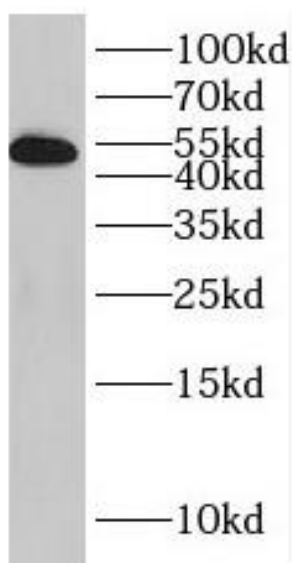
Reactivity:	Human, Mouse, Rat
Tested Application:	ELISA, WB, IHC
Recommended dilution:	WB: 1:500-1:2000; IHC: 1:20-1:200
Image:	

This Antibody is for Research Use Only. Not for Diagnostic Procedures.

This is a sample Antibody manual only. Always refer to the hard copy manual included in the Antibody for your experiment.



Immunohistochemistry of paraffin-embedded human heart tissue slide using CAF50090(DES Antibody) at dilution of 1:50



mouse heart tissue were subjected to SDS PAGE followed by western blot with CAF50090(DES Antibody) at dilution of 1:600

This Antibody is for Research Use Only. Not for Diagnostic Procedures.

This is a sample Antibody manual only. Always refer to the hard copy manual included in the Antibody for your experiment.