

## anti- DLAT antibody

### Product Information

Catalog No.:	CAF50096
Size:	100µg
Form:	liquid
Purification:	Immunogen affinity purified
Purity:	≥95% as determined by SDS-PAGE
Host:	Rabbit
Clonality:	polyclonal
Clone ID:	None
IsoType:	IgG
Storage:	PBS with 0.02% sodium azide and 50% glycerol pH 7.3, -20°C for 12 months (Avoid repeated freeze / thaw cycles.)

### Background

The pyruvate dehydrogenase complex catalyzes the overall conversion of pyruvate to acetyl-CoA and CO<sub>2</sub>, and thereby links the glycolytic pathway to the tricarboxylic cycle.

### Immunogen information

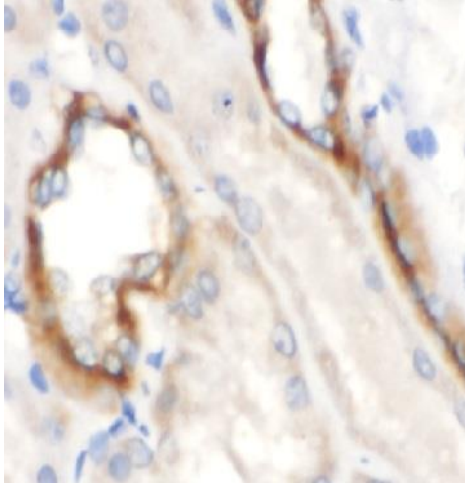
Immunogen:	dihydroliipoamide S-acetyltransferase
Synonyms:	DLAT, DLTA, PBC, PDC E2, PDCE2
Observed MW:	70kd
Uniprot ID :	P10515

### Application

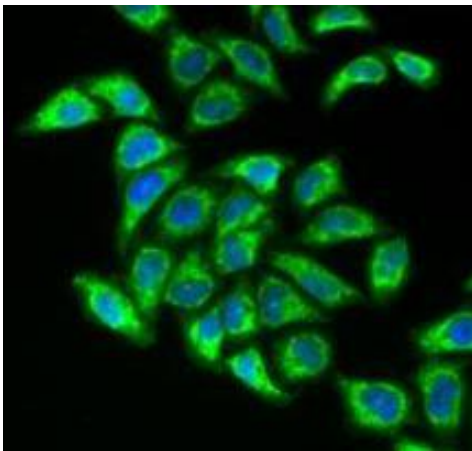
Reactivity:	Human, Mouse, Rat
Tested Application:	ELISA, WB, IF, IP, IHC
Recommended dilution:	WB: 1:500-1:3000; IF : 1:10-1:100; IHC: 1:50 - 1:200
Image:	

**This Antibody is for Research Use Only. Not for Diagnostic Procedures.**

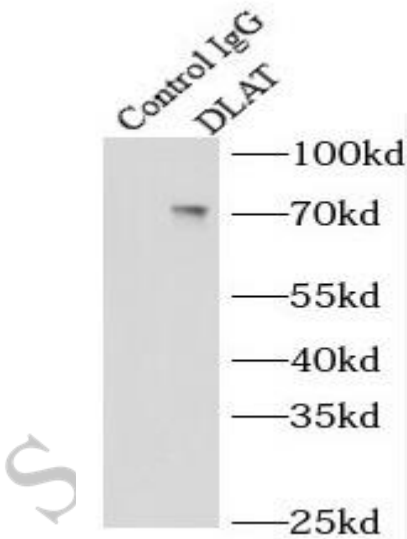
This is a sample Antibody manual only. Always refer to the hard copy manual included in the Antibody for your experiment.



Immunohistochemistry of paraffin-embedded human kidney using CAF50096( DLAT Antibody) at dilution of 1:100



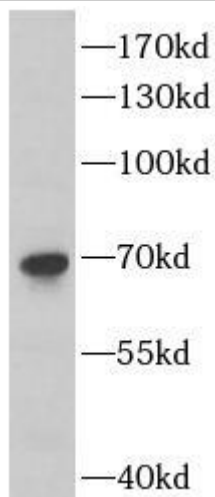
Immunofluorescent analysis of HeLa cells using CAF50096 (DLAT antibody) at dilution of 1:25 and Alexa Fluor 488-conjugated Goat Anti-Rabbit IgG(H+L)



IP Result of anti-DLAT (IP:CAF50096, 3ug; Detection:CAF50096 1:1000) with HepG2 cells lysate 2000ug.

**This Antibody is for Research Use Only. Not for Diagnostic Procedures.**

This is a sample Antibody manual only. Always refer to the hard copy manual included in the Antibody for your experiment.



HepG2 cells were subjected to SDS PAGE followed by western blot with CAF50096( DLAT Antibody) at dilution of 1:2000

ONLY

SAMPLE

**This Antibody is for Research Use Only. Not for Diagnostic Procedures.**

This is a sample Antibody manual only. Always refer to the hard copy manual included in the Antibody for your experiment.