

anti- EHBP1 antibody

Product Information

Catalog No.:	CAF50099
Size:	100µg
Form:	liquid
Purification:	Immunogen affinity purified
Purity:	≥95% as determined by SDS-PAGE
Host:	Rabbit
Clonality:	polyclonal
Clone ID:	None
IsoType:	IgG
Storage:	PBS with 0.02% sodium azide and 50% glycerol pH 7.3, -20°C for 12 months (Avoid repeated freeze / thaw cycles.)

Background

May play a role in actin reorganization. Links clathrin-mediated endocytosis to the actin cytoskeleton.

Immunogen information

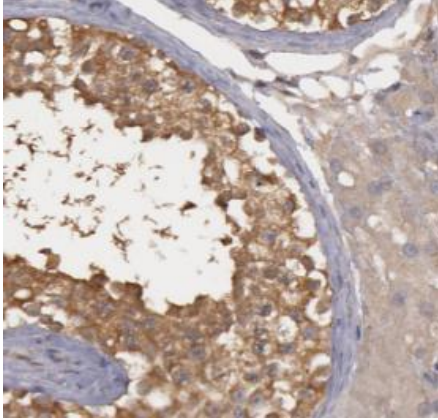
Immunogen:	EH domain binding protein 1
Synonyms:	EH domain binding protein 1, EHBP1, HPC12, KIAA0903, NACSIN
Observed MW:	140-160 kDa
Uniprot ID :	Q8NDI1

Application

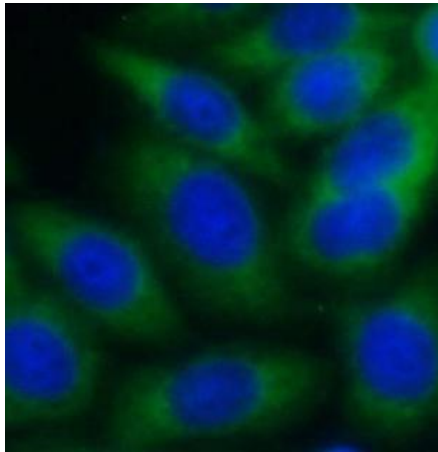
Reactivity:	Human, Mouse, Rat
Tested Application:	ELISA, WB, IHC, IP, IF
Recommended dilution:	WB: 1:500-1:3000; IP: 1:500-1:1000; IHC: 1:20-1:200; IF: 1:20-1:200
Image:	

This Antibody is for Research Use Only. Not for Diagnostic Procedures.

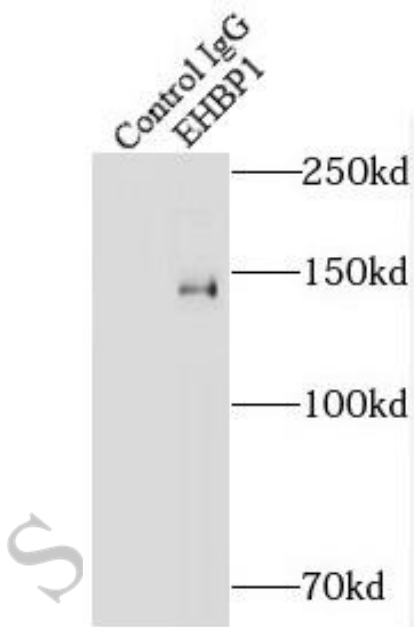
This is a sample Antibody manual only. Always refer to the hard copy manual included in the Antibody for your experiment.



Immunohistochemistry of paraffin-embedded human testis using CAF50099(EHP1 antibody) at dilution of 1:100



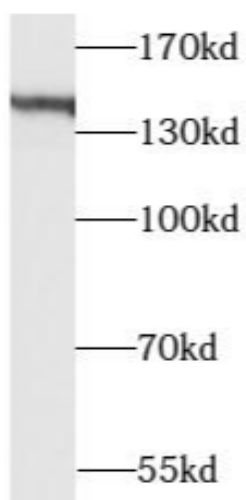
Immunofluorescent analysis of HepG2 cells using CAF50099 (EHP1 antibody) at dilution of 1:50 and Alexa Fluor 488-conjugated Goat Anti-Rabbit IgG(H+L)



IP Result of anti-EHP1 (IP:CAF50099, 4ug; Detection:CAF50099 1:500) with mouse liver tissue lysate 4000ug.

This Antibody is for Research Use Only. Not for Diagnostic Procedures.

This is a sample Antibody manual only. Always refer to the hard copy manual included in the Antibody for your experiment.



HepG2 cells were subjected to SDS PAGE followed by western blot with CAF50099(EHBP1 antibody) at dilution of 1:500

ONLY

SAMPLE

This Antibody is for Research Use Only. Not for Diagnostic Procedures.

This is a sample Antibody manual only. Always refer to the hard copy manual included in the Antibody for your experiment.