

anti- ELF1 antibody

Product Information

Catalog No.:	CAF50102
Size:	100µg
Form:	liquid
Purification:	Immunogen affinity purified
Purity:	≥95% as determined by SDS-PAGE
Host:	Rabbit
Clonality:	polyclonal
Clone ID:	None
IsoType:	IgG
Storage:	PBS with 0.02% sodium azide and 50% glycerol pH 7.3, -20°C for 12 months (Avoid repeated freeze / thaw cycles.)

Background

Transcription factor that activates the LYN and BLK promoters. Appears to be required for the T-cell-receptor-mediated trans activation of HIV-2 gene expression. Binds specifically to two purine-rich motifs in the HIV-2 enhancer.

Immunogen information

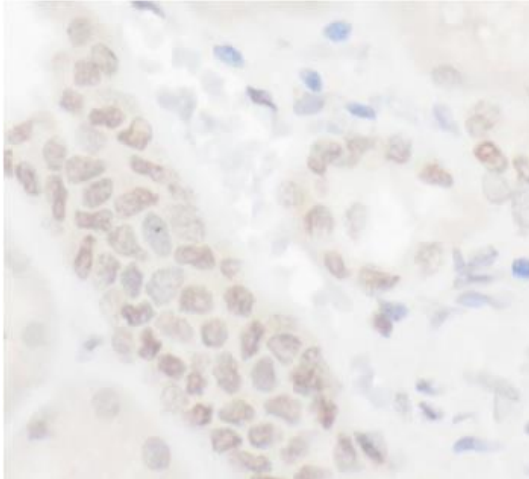
Immunogen:	E74-like factor 1(ets domain transcription factor)
Synonyms:	E74 like factor 1, ELF1
Observed MW:	97 kDa
Uniprot ID :	P32519

Application

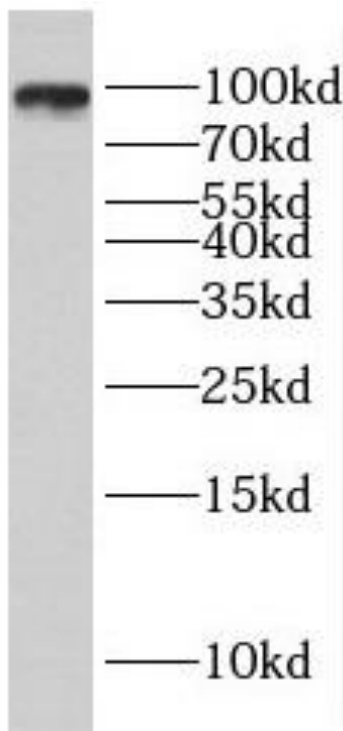
Reactivity:	Human
Tested Application:	ELISA, WB, IHC
Recommended dilution:WB:	1:500-1:2000
Image:	

This Antibody is for Research Use Only. Not for Diagnostic Procedures.

This is a sample Antibody manual only. Always refer to the hard copy manual included in the Antibody for your experiment.



Immunohistochemistry of paraffin-embedded human kidney slide using CAF50102(ELF1 Antibody) at dilution of 1:50



PC-3 cells were subjected to SDS PAGE followed by western blot with CAF50102(ELF1 antibody) at dilution of 1:1000

This Antibody is for Research Use Only. Not for Diagnostic Procedures.

This is a sample Antibody manual only. Always refer to the hard copy manual included in the Antibody for your experiment.