

anti- ELK1 antibody

Product Information

Catalog No.:	CAF50103
Size:	100µg
Form:	liquid
Purification:	Immunogen affinity purified
Purity:	≥95% as determined by SDS-PAGE
Host:	Rabbit
Clonality:	polyclonal
Clone ID:	None
IsoType:	IgG
Storage:	PBS with 0.02% sodium azide and 50% glycerol pH 7.3, -20°C for 12 months (Avoid repeated freeze / thaw cycles.)

Background

This gene is a member of the Ets family of transcription factors and of the ternary complex factor (TCF) subfamily. Proteins of the TCF subfamily form a ternary complex by binding to the the serum response factor and the serum response element in the promoter of the c-fos proto-oncogene. The protein encoded by this gene is a nuclear target for the ras-raf-MAPK signaling cascade. This gene produces multiple isoforms by using alternative translational start codons and by alternative splicing. Related pseudogenes have been identified on chromosomes 7 and 14.

Immunogen information

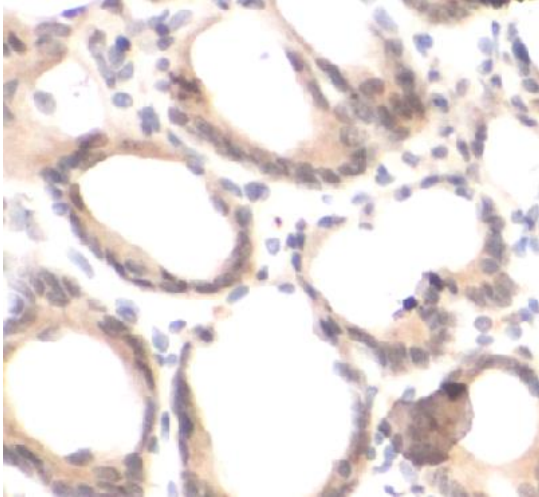
Immunogen:	ELK1, member of ETS oncogene family
Synonyms:	ELK1, ELK1, ETS transcription factor
Observed MW:	45 kDa, 60 kDa
Uniprot ID :	P19419

Application

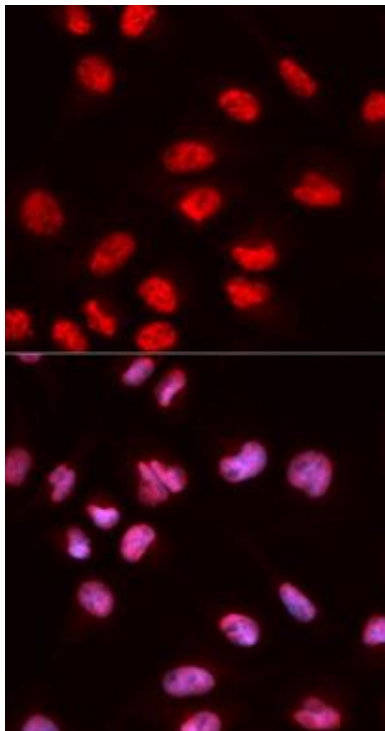
Reactivity:	Human, Mouse, Rat
Tested Application:	ELISA, WB, IHC, IF
Recommended dilution:	WB: 1:500 - 1:1000; IHC: 1:50 - 1:100; IF: 1:50 - 1:100
Image:	

This Antibody is for Research Use Only. Not for Diagnostic Procedures.

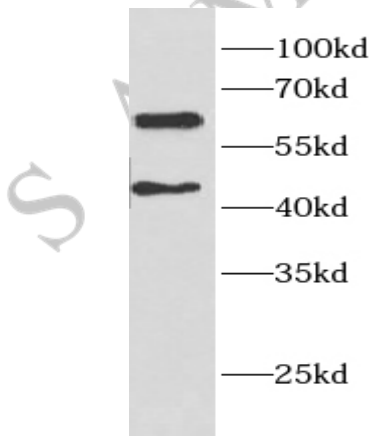
This is a sample Antibody manual only. Always refer to the hard copy manual included in the Antibody for your experiment.



Immunohistochemistry of paraffin-embedded rat intestine using CAF50103(ELK1 Antibody) at dilution of 1:100



Immunofluorescence analysis of MCF-7 cells using CAF50103(ELK1 antibody) at dilution of 1:50



HeLa cells were subjected to SDS PAGE followed by western blot with CAF50103(ELK1 antibody) at dilution of 1:1000

This Antibody is for Research Use Only. Not for Diagnostic Procedures.

This is a sample Antibody manual only. Always refer to the hard copy manual included in the Antibody for your experiment.