

anti- ERK1/2 antibody

Product Information

Catalog No.:	CAF50105
Size:	100µg
Form:	liquid
Purification:	Immunogen affinity purified
Purity:	≥95% as determined by SDS-PAGE
Host:	Rabbit
Clonality:	polyclonal
Clone ID:	None
IsoType:	IgG
Storage:	PBS with 0.02% sodium azide and 50% glycerol pH 7.3, -20°C for 12 months (Avoid repeated freeze / thaw cycles.)

Background

This gene encodes a member of the MAP kinase family. MAP kinases, also known as extracellular signal-regulated kinases (ERKs), act as an integration point for multiple biochemical signals, and are involved in a wide variety of cellular processes such as proliferation, differentiation, transcription regulation and development. The activation of this kinase requires its phosphorylation by upstream kinases. Upon activation, this kinase translocates to the nucleus of the stimulated cells, where it phosphorylates nuclear targets. One study also suggests that this protein acts as a transcriptional repressor independent of its kinase activity. The encoded protein has been identified as a moonlighting protein based on its ability to perform mechanistically distinct functions. Two alternatively spliced transcript variants encoding the same protein, but differing in the UTRs, have been reported for this gene.

Immunogen information

Immunogen:	mitogen-activated protein kinase 1
Synonyms:	ERK, ERK 2, ERK1/2, ERK2, ERT1, MAP kinase 1, MAP kinase 2, MAP kinase isoform p42, MAPK 1, MAPK 2, MAPK1, MAPK2, p40, p41, p41mapk, p42 MAPK, P42MAPK, PRKM1, PRKM2
Observed MW:	40 kDa
Uniprot ID :	P28482

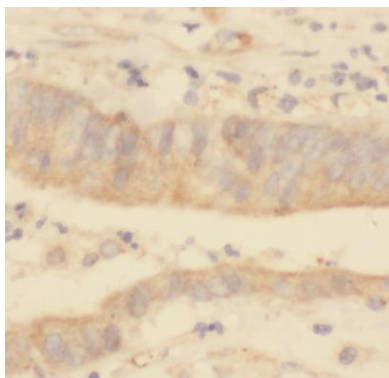
Application

Reactivity:	Human, Mouse, Rat
Tested Application:	ELISA, WB, IHC
Recommended dilution:WB:	1:500 - 1:2000; IHC: 1:50 - 1:100

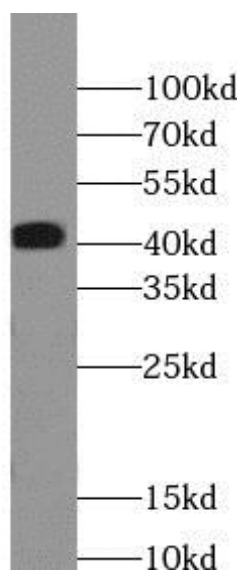
This Antibody is for Research Use Only. Not for Diagnostic Procedures.

This is a sample Antibody manual only. Always refer to the hard copy manual included in the Antibody for your experiment.

Image:



Immunohistochemistry of paraffin-embedded human colon cancer tissue slide using CAF50105(ERK1/2 Antibody) at dilution of 1:200 heat mediated antigen retrieved with Tris-EDTA buffer(pH9).



HeLa cells were subjected to SDS PAGE followed by western blot with CAF50105(ERK1/2 antibody) at dilution of 1:1000

This Antibody is for Research Use Only. Not for Diagnostic Procedures.

This is a sample Antibody manual only. Always refer to the hard copy manual included in the Antibody for your experiment.