

## anti- F4/80 antibody

### Product Information

Catalog No.:	CAF50109
Size:	100µg
Form:	liquid
Purification:	Immunogen affinity purified
Purity:	≥95% as determined by SDS-PAGE
Host:	Rabbit
Clonality:	polyclonal
IsoType:	IgG
Storage:	PBS with 0.02% sodium azide and 50% glycerol pH 7.3, -20°C for 12 months (Avoid repeated freeze / thaw cycles.)

### Immunogen information

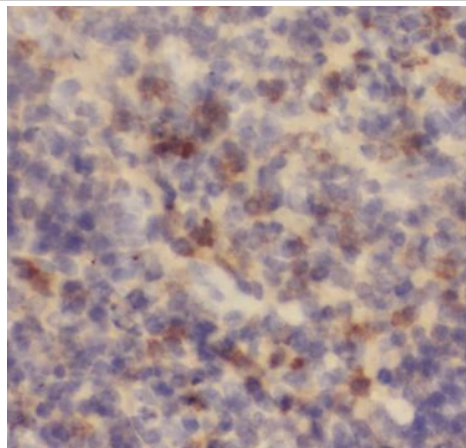
Immunogen:	EGF-like module containing, mucin-like, hormone receptor-like sequence 1
Synonyms:	ADGRE1, Adhesion G protein-coupled receptor E1, EGF like module receptor 1, EMR1, EMR1 hormone receptor, F4/80, TM7LN3
Observed MW:	160 kDa
Uniprot ID :	Q14246

### Application

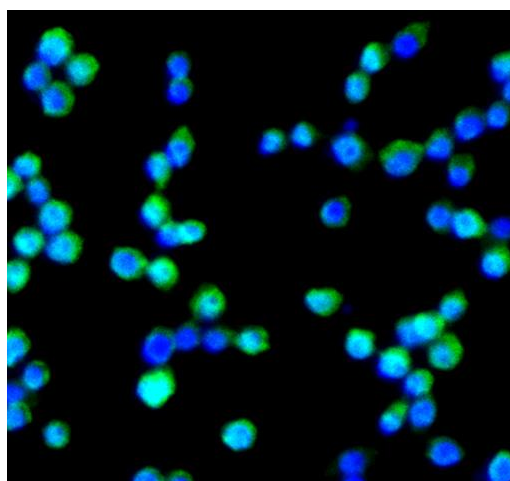
Reactivity:	Human, Mouse, Rat
Tested Application:	ELISA, WB, IHC, IF
Recommended dilution:	WB: 1:500-1:1000; IHC: 1:20-1:200; IF: 1:50-1:500
Image:	

**This Antibody is for Research Use Only. Not for Diagnostic Procedures.**

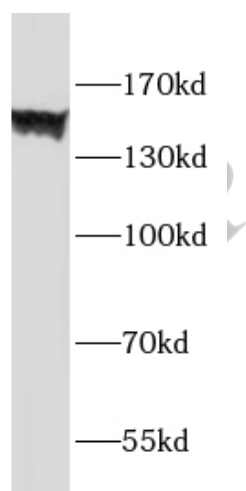
This is a sample Antibody manual only. Always refer to the hard copy manual included in the Antibody for your experiment.



Immunohistochemistry of paraffin-embedded mouse spleen tissue slide using CAF50109(F4/80 Antibody) at dilution of 1:200



Immunofluorescent analysis of ( 10% Formaldehyde ) fixed Raw264.7 cells using CAF50109 (F4/80 antibody) at dilution of 1:50 and FITC-conjugated Goat Anti-Rabbit IgG(H+L)



HL-60 cells were subjected to SDS PAGE followed by western blot with CAF50109(F4/80 Antibody) at dilution of 1:1000

**This Antibody is for Research Use Only. Not for Diagnostic Procedures.**

This is a sample Antibody manual only. Always refer to the hard copy manual included in the Antibody for your experiment.