

## anti- GATA6 antibody

### Product Information

Catalog No.:	CAF50127
Size:	100µg
Form:	liquid
Purification:	Immunogen affinity purified
Purity:	≥95% as determined by SDS-PAGE
Host:	Rabbit
Clonality:	polyclonal
Clone ID:	None
IsoType:	IgG
Storage:	PBS with 0.02% sodium azide and 50% glycerol pH 7.3, -20°C for 12 months (Avoid repeated freeze / thaw cycles.)

### Background

Transcriptional activator that regulates SEMA3C and PLXNA2(PubMed:19666519). Involved in gene regulation specifically in the gastric epithelium(PubMed:9315713). May regulate genes that protect epithelial cells from bacterial infection(PubMed:16968778). Involved in bone morphogenetic protein(BMP)-mediated cardiac-specific gene expression(By similarity). Binds to BMP response element(BMPRE) DNA sequences within cardiac activating regions(By similarity).

### Immunogen information

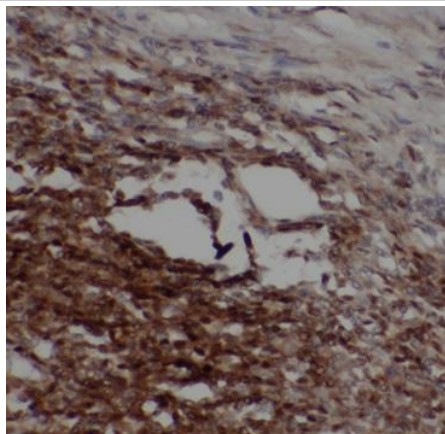
Immunogen:	GATA binding protein 6
Synonyms:	GATA binding factor 6, GATA binding protein 6, GATA6, Transcription factor GATA 6
Observed MW:	45 kDa, 60 kDa
Uniprot ID :	Q92908

### Application

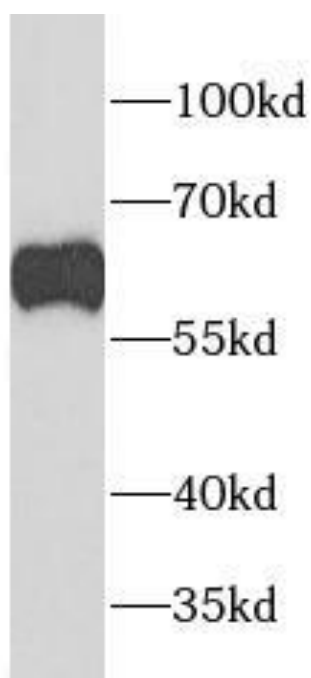
Reactivity:	Human
Tested Application:	ELISA, WB, IHC
Recommended dilution:	WB: 1:200 - 1:2000; IHC: 1:50 - 1:500
Image:	

**This Antibody is for Research Use Only. Not for Diagnostic Procedures.**

This is a sample Antibody manual only. Always refer to the hard copy manual included in the Antibody for your experiment.



Immunohistochemistry of paraffin-embedded human intestinal cancer using CAF50127(GATA6 antibody) at dilution of 1:200



MCF-7 cells were subjected to SDS PAGE followed by western blot with CAF50127(GATA6 antibody) at dilution of 1:1000

**This Antibody is for Research Use Only. Not for Diagnostic Procedures.**

This is a sample Antibody manual only. Always refer to the hard copy manual included in the Antibody for your experiment.