

anti- GLUT3 antibody

Product Information

Catalog No.:	CAF50136
Size:	100µg
Form:	liquid
Purification:	Immunogen affinity purified
Purity:	≥95% as determined by SDS-PAGE
Host:	Rabbit
Clonality:	polyclonal
Clone ID:	None
IsoType:	IgG
Storage:	PBS with 0.02% sodium azide and 50% glycerol pH 7.3, -20°C for 12 months (Avoid repeated freeze / thaw cycles.)

Background

GLUT3(SLC2A3) belongs to the glucose transporter family(GLUTs) which mediates the transport of glucose across cellular membranes in mammalian cells. There are three subclasses within GLUTs: class I comprises the classical transporters GLUT1-4 and GLUT14; class II contains the "odd" isoforms GLUT5, 7, 9, and 11; the isoforms GLUT6, 8, 10, 12 and the proton driven myoinositol transporter HMIT(GLUT13) belong to class III. This antibody was generated against the internal region of human GLUT3 and may cross-react with GLUT14.

Immunogen information

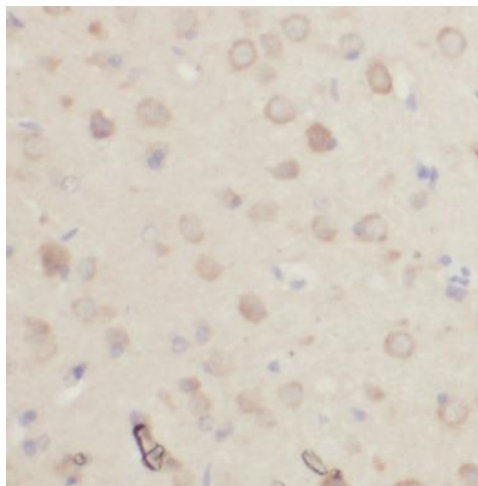
Immunogen:	solute carrier family 2(facilitated glucose transporter), member 3
Synonyms:	GLUT 3, GLUT3, SLC2A3
Observed MW:	50kd
Uniprot ID :	P11169

Application

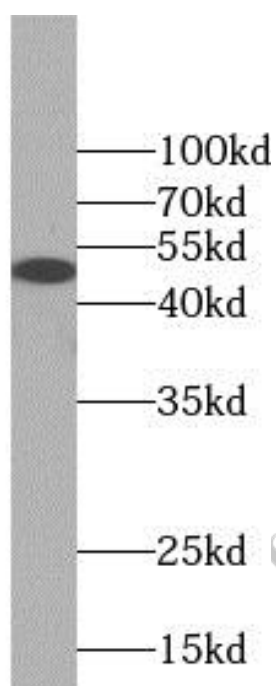
Reactivity:	Human, Mouse
Tested Application:	ELISA, IHC, WB
Recommended dilution:	WB: 1:200-1:2000; IHC: 1:20-1:200
Image:	

This Antibody is for Research Use Only. Not for Diagnostic Procedures.

This is a sample Antibody manual only. Always refer to the hard copy manual included in the Antibody for your experiment.



Immunohistochemistry of paraffin-embedded human brain slide using CAF50136(SLC2A3 Antibody) at dilution of 1:50



mouse brain tissue were subjected to SDS PAGE followed by western blot with CAF50136(SLC2A3 Antibody) at dilution of 1:600

This Antibody is for Research Use Only. Not for Diagnostic Procedures.

This is a sample Antibody manual only. Always refer to the hard copy manual included in the Antibody for your experiment.