

anti- GPR177 antibody

Product Information

Catalog No.:	CAF50141
Size:	100µg
Form:	liquid
Purification:	Immunogen affinity purified
Purity:	≥95% as determined by SDS-PAGE
Host:	Rabbit
Clonality:	polyclonal
Clone ID:	None
IsoType:	IgG
Storage:	PBS with 0.02% sodium azide and 50% glycerol pH 7.3, -20°C for 12 months (Avoid repeated freeze / thaw cycles.)

Background

GPR177, also known as Wntless (WLS) or Evi, is an evolutionarily conserved transmembrane protein necessary for Wnt protein secretion. GPR177 localizes to compartments of the secretory pathway, including the ER, Golgi apparatus, endosomes, and plasma membrane. GPR177 is overexpressed in several cancer types including glioma and gastric cancer. Several isoforms of GPR177 exist due to the alternative splicing, with predicted MW around 62 and 51 kDa, respectively. The sequence can be processed by removing the signal peptide, which generates a mature form of 45-46 kDa. In addition, slow migrating band above 62 kDa can also be detected because GPR177 is modified by N-linked glycosylation (PMID: 20549736).

Immunogen information

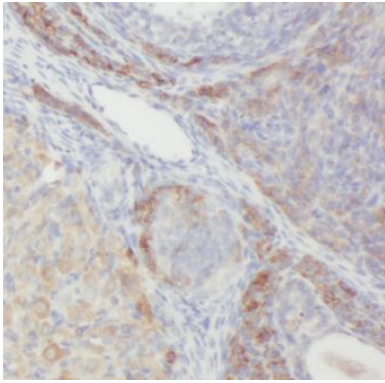
Immunogen:	G protein-coupled receptor 177
Synonyms:	C1orf139, EVI, G protein coupled receptor 177, GPR177, Protein wntless homolog, Sprinter, WLS, Wntless
Observed MW:	46-62 kDa
Uniprot ID :	Q5T9L3

Application

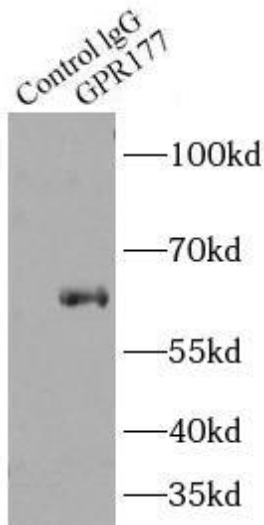
Reactivity:	Human, Mouse, Rat
Tested Application:	ELISA, WB, IHC, IP
Recommended dilution:	WB: 1:500-1:1000; IP: 1:500-1:1000; IHC: 1:20-1:200
Image:	

This Antibody is for Research Use Only. Not for Diagnostic Procedures.

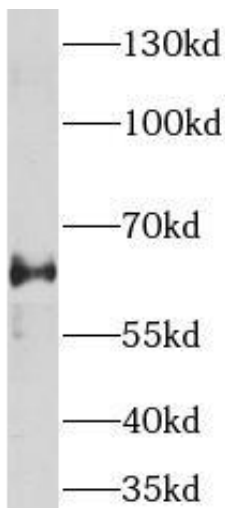
This is a sample Antibody manual only. Always refer to the hard copy manual included in the Antibody for your experiment.



Immunohistochemistry of paraffin-embedded human ovary using CAF50141(GPR177 antibody) at dilution of 1:100



IP Result of anti-GPR177 (IP: CAF50141, 3ug; Detection: CAF50141 1:500) with mouse liver tissue lysate 10000ug.



mouse liver tissue were subjected to SDS PAGE followed by western blot with CAF50141(GPR177 antibody) at dilution of 1:500

This Antibody is for Research Use Only. Not for Diagnostic Procedures.

This is a sample Antibody manual only. Always refer to the hard copy manual included in the Antibody for your experiment.