

anti- HBG1 antibody

Product Information

Catalog No.:	CAF50150
Size:	100µg
Form:	liquid
Purification:	Immunogen affinity purified
Purity:	≥95% as determined by SDS-PAGE
Host:	Rabbit
Clonality:	polyclonal
Clone ID:	None
IsoType:	IgG
Storage:	PBS with 0.02% sodium azide and 50% glycerol pH 7.3, -20°C for 12 months (Avoid repeated freeze / thaw cycles.)

Background

Gamma chains make up the fetal hemoglobin F, in combination with alpha chains.

Immunogen information

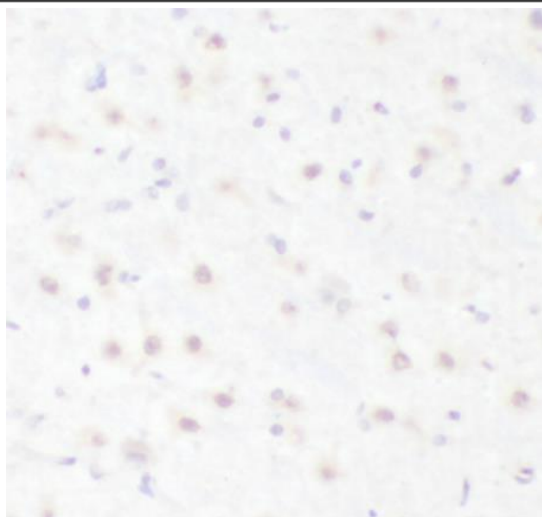
Immunogen:	hemoglobin, gamma A
Synonyms:	Gamma 1 globin, Hb F Agamma, HBG1, HBGA, HBGR, Hemoglobin gamma 1 chain, Hemoglobin gamma A chain, Hemoglobin subunit gamma 1, hemoglobin, gamma A, HSGGL1, PRO2979
Observed MW:	14-16 kDa
Uniprot ID :	P69891

Application

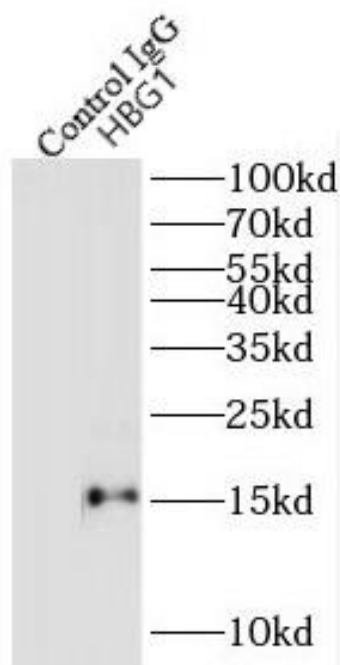
Reactivity:	Human, Mouse, Rat
Tested Application:	ELISA, WB, IHC, IP
Recommended dilution:	WB: 1:500-1:1000; IHC: 1:50-1:200; IP: 1:200-1:1000
Image:	

This Antibody is for Research Use Only. Not for Diagnostic Procedures.

This is a sample Antibody manual only. Always refer to the hard copy manual included in the Antibody for your experiment.



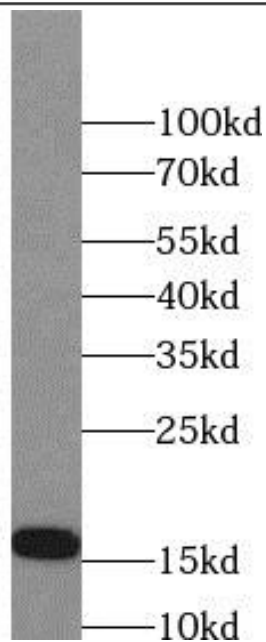
Immunohistochemistry of paraffin-embedded rat brain using CAF50150(HBG1 antibody) at dilution of 1:100



IP Result of anti-HBG1 (IP:CAF50150, 3ug; Detection:CAF50150 1:300) with K-562 cells lysate 2000ug.

This Antibody is for Research Use Only. Not for Diagnostic Procedures.

This is a sample Antibody manual only. Always refer to the hard copy manual included in the Antibody for your experiment.



human placenta tissue were subjected to SDS
PAGE followed by western blot with
CAF50150(HBG1 Antibody) at dilution of 1:600

ONLY

SAMPLE

This Antibody is for Research Use Only. Not for Diagnostic Procedures.

This is a sample Antibody manual only. Always refer to the hard copy manual included in the Antibody for your experiment.