

anti- hCG alpha antibody

Product Information

Catalog No.:	CAF50151
Size:	100µg
Form:	liquid
Purification:	Immunogen affinity purified
Purity:	≥95% as determined by SDS-PAGE
Host:	Rabbit
Clonality:	polyclonal
Clone ID:	None
IsoType:	IgG
Storage:	PBS with 0.02% sodium azide and 50% glycerol pH 7.3, -20°C for 12 months (Avoid repeated freeze / thaw cycles.)

Immunogen information

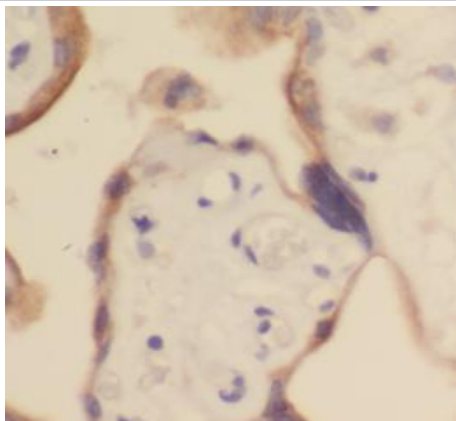
Immunogen:	glycoprotein hormones, alpha polypeptide
Synonyms:	CG ALPHA, CGA, Choriogonadotropin alpha chain, Follitropin alpha chain, FSH alpha, FSHA, GPHa, GPHA1, HCG, hCG alpha, LHA, LSH alpha, Lutropin alpha chain, Thyrotropin alpha chain, TSH alpha, TSHA
Observed MW:	22 kDa
Uniprot ID :	P01215

Application

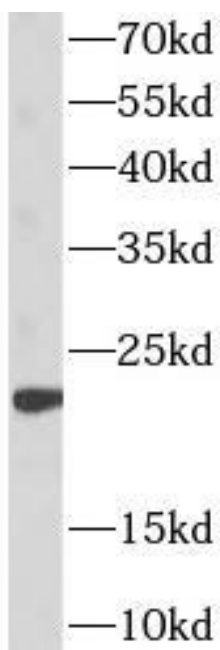
Reactivity:	Human
Tested Application:	ELISA, WB, IHC
Recommended dilution:	WB: 1:1000-1:3000; IHC: 1:20-1:200
Image:	

This Antibody is for Research Use Only. Not for Diagnostic Procedures.

This is a sample Antibody manual only. Always refer to the hard copy manual included in the Antibody for your experiment.



Immunohistochemistry of paraffin-embedded human placenta tissue slide using CAF50151 (hCG alpha antibody) at dilution of 1:200



JAR cells were subjected to SDS PAGE followed by western blot with CAF50151 (hCG alpha antibody) at dilution of 1:1000