

## anti- HEY1 antibody

### Product Information

Catalog No.:	CAF50153
Size:	100µg
Form:	liquid
Purification:	Immunogen affinity purified
Purity:	≥95% as determined by SDS-PAGE
Host:	Rabbit
Clonality:	polyclonal
Clone ID:	None
IsoType:	IgG
Storage:	PBS with 0.02% sodium azide and 50% glycerol pH 7.3, -20°C for 12 months (Avoid repeated freeze / thaw cycles.)

### Background

Transcriptional repressor which binds preferentially to the canonical E box sequence 5'-CACGTG-3'(PubMed:11095750). Downstream effector of Notch signaling required for cardiovascular development. Specifically required for the Notch-induced endocardial epithelial to mesenchymal transition, which is itself critical for cardiac valve and septum development. May be required in conjunction with HEY2 to specify arterial cell fate or identity. Promotes maintenance of neuronal precursor cells and glial versus neuronal fate specification. Represses transcription by the cardiac transcriptional activators GATA4 and GATA6 and by the neuronal bHLH factors ASCL1/MASH1 and NEUROD4/MATH3(PubMed:15485867). Involved in the regulation of liver cancer cells self-renewal(PubMed:25985737).

### Immunogen information

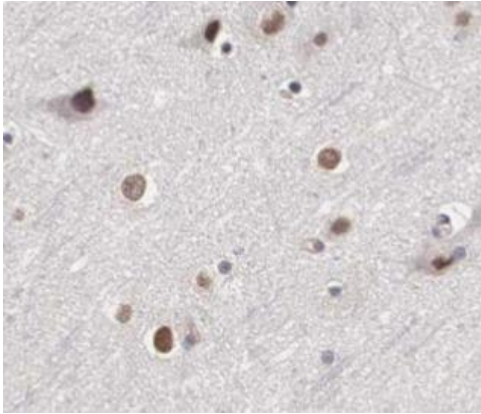
Immunogen:	hairy/enhancer-of-split related with YRPW motif 1
Synonyms:	BHLHB31, CHF2, HERP2, HESR1, HRT1
Observed MW:	33 kDa
Uniprot ID :	Q9Y5J3

### Application

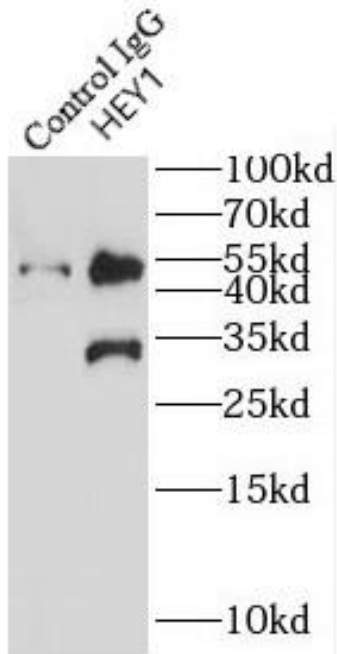
Reactivity:	Human, Mouse, Rat
Tested Application:	ELISA, WB, IHC, IP
Recommended dilution:	WB: 1:500-1:5000; IP: 1:200-1:2000; IHC: 1:20-1:200
Image:	

**This Antibody is for Research Use Only. Not for Diagnostic Procedures.**

This is a sample Antibody manual only. Always refer to the hard copy manual included in the Antibody for your experiment.



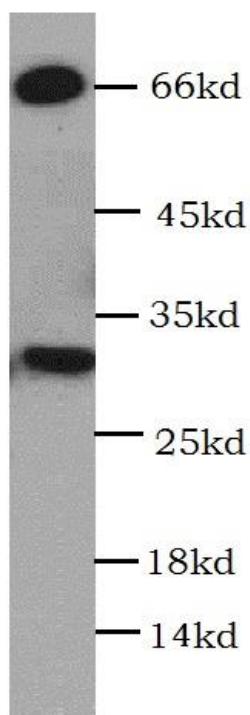
Immunohistochemistry of paraffin-embedded human brain using CAF50153(HEY1 antibody) at dilution of 1:100



IP Result of anti-HEY1 (IP:CAF50153, 4ug; Detection:CAF50153 1:500) with mouse kidney tissue lysate 4400ug.

**This Antibody is for Research Use Only. Not for Diagnostic Procedures.**

This is a sample Antibody manual only. Always refer to the hard copy manual included in the Antibody for your experiment.



DU 145 cells were subjected to SDS PAGE followed by western blot with CAF50153(HEY1 antibody) at dilution of 1:3000

ONLY

SAMPLE

**This Antibody is for Research Use Only. Not for Diagnostic Procedures.**

This is a sample Antibody manual only. Always refer to the hard copy manual included in the Antibody for your experiment.