

anti- HMOX1 antibody

Product Information

Catalog No.:	CAF50158
Size:	100µg
Form:	liquid
Purification:	Immunogen affinity purified
Purity:	≥95% as determined by SDS-PAGE
Host:	Rabbit
Clonality:	polyclonal
Clone ID:	None
IsoType:	IgG
Storage:	PBS with 0.02% sodium azide and 50% glycerol pH 7.3, -20°C for 12 months (Avoid repeated freeze / thaw cycles.)

Background

Heme oxygenase cleaves the heme ring at the alpha methene bridge to form biliverdin. Biliverdin is subsequently converted to bilirubin by biliverdin reductase. Under physiological conditions, the activity of heme oxygenase is highest in the spleen, where senescent erythrocytes are sequestered and destroyed. Exhibits cytoprotective effects since excess of free heme sensitizes cells to undergo apoptosis.

Immunogen information

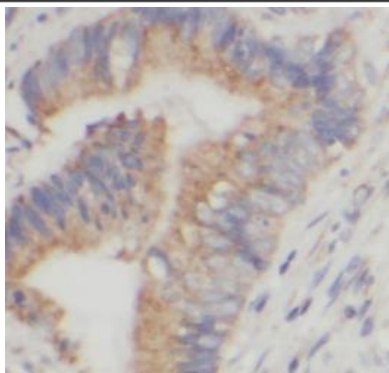
Immunogen:	heme oxygenase(decycling) 1
Synonyms:	Heme oxygenase 1, HMOX1, HO, HO 1, HO1, HSP32
Observed MW:	33 kDa
Uniprot ID :	P09601

Application

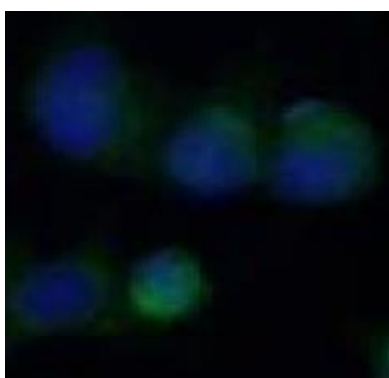
Reactivity:	Human, Mouse, Rat
Tested Application:	ELISA, WB, IHC, IP, IF
Recommended dilution:	WB: 1:500-1:1000; IP: 1:500-1:2000; IHC: 1:100-1:400; IF: 1:20-1:200
Image:	

This Antibody is for Research Use Only. Not for Diagnostic Procedures.

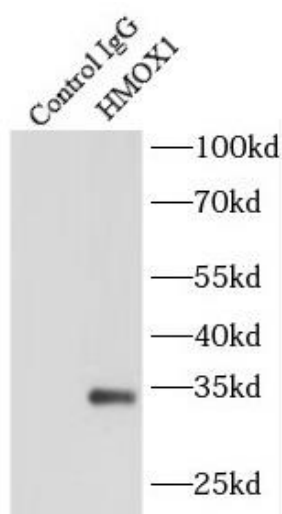
This is a sample Antibody manual only. Always refer to the hard copy manual included in the Antibody for your experiment.



Immunohistochemistry of paraffin-embedded human liver cancer tissue slide using CAF50158(HO-1 Antibody) at dilution of 1:200



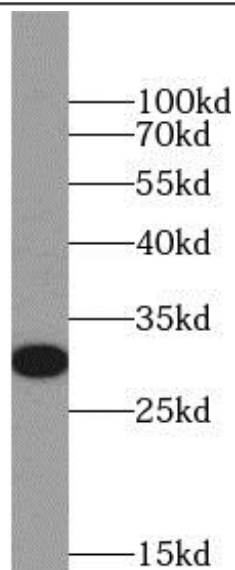
Immunofluorescent analysis of (-20°C Ethanol) fixed HT-1080 cells using CAF50158 (HO-1 antibody) at dilution of 1:50 and Alexa Fluor 488-conjugated Goat Anti-Rabbit IgG(H+L)



IP Result of anti-HMOX1 (IP:CAF50158, 3ug; Detection:CAF50158 1:1000) with HeLa cells lysate 3000ug.

This Antibody is for Research Use Only. Not for Diagnostic Procedures.

This is a sample Antibody manual only. Always refer to the hard copy manual included in the Antibody for your experiment.



mouse liver tissue were subjected to SDS PAGE followed by western blot with CAF50158(HMOX1 antibody) at dilution of 1:600

ONLY

SAMPLE

This Antibody is for Research Use Only. Not for Diagnostic Procedures.

This is a sample Antibody manual only. Always refer to the hard copy manual included in the Antibody for your experiment.