

## anti- IBA1 antibody

### Product Information

Catalog No.:	CAF50168
Size:	100µg
Form:	liquid
Purification:	Immunogen affinity purified
Purity:	≥95% as determined by SDS-PAGE
Host:	Rabbit
Clonality:	polyclonal
Clone ID:	None
IsoType:	IgG
Storage:	PBS with 0.02% sodium azide and 50% glycerol pH 7.3, -20°C for 12 months (Avoid repeated freeze / thaw cycles.)

### Background

AIF1, also named as G1, IBA1 or daintain/AIF-1, is a 143 amino acid cytoplasmic, inflammation response scaffold protein. It is constitutively expressed in monocytes and macrophages and is known to be involved in macrophage activation. It is a marker of activated macrophage. Despite a lack of detailed knowledge on the in vivo physiological functions of AIF-1, there is growing evidence that shows its aberrant expression contributes to the pathogenesis of many autoimmune diseases, including rheumatoid arthritis. (20944424). AIF1 is an actin-binding protein that enhances membrane ruffling and RAC activation. It enhances lymphocyte migration and the actin-bundling activity of LCPI. AIF1 plays a role in RAC signaling and in phagocytosis and a role in vascular inflammation. AIF1 promotes the proliferation of vascular smooth muscle cells and of T-lymphocytes. It is also as a microglial cell marker.

### Immunogen information

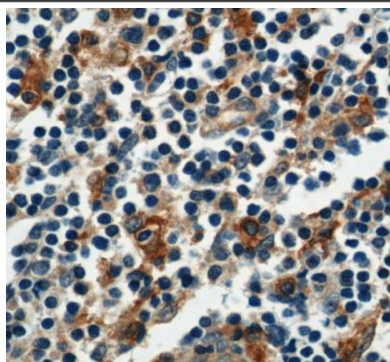
Immunogen:	allograft inflammatory factor 1
Synonyms:	AIF 1, AIF1, G1, IBA1, IRT 1, Protein G1
Observed MW:	17 kDa
Uniprot ID :	P55008

### Application

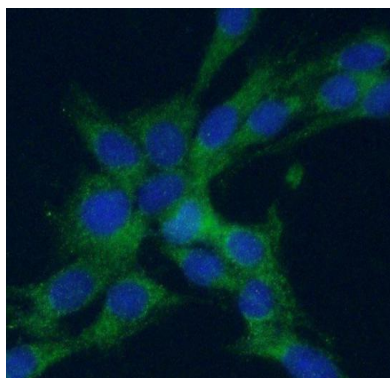
Reactivity:	Human, Mouse, Rat
Tested Application:	ELISA, WB, IF, IHC
Recommended dilution:	WB: 1:500-1:2000; IHC: 1:20-1:200; IF: 1:50-1:500
Image:	

**This Antibody is for Research Use Only. Not for Diagnostic Procedures.**

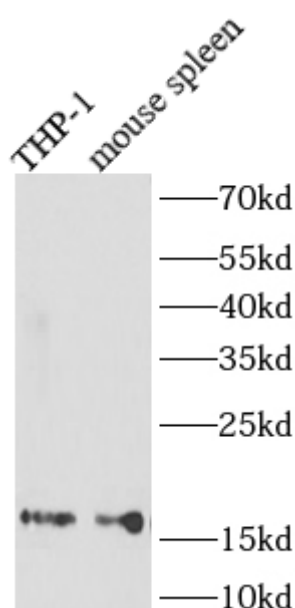
This is a sample Antibody manual only. Always refer to the hard copy manual included in the Antibody for your experiment.



Immunohistochemistry of paraffin-embedded human tonsillitis using CAF50168 (IBA1 antibody) at dilution of 1:50



Immunofluorescent analysis of (-20°C Ethanol) fixed C6 cells using CAF50168 (IBA1 Antibody) at dilution of 1:50 and Alexa Fluor 488-conjugated Goat Anti-Rabbit IgG (H+L)



Various lysates were subjected to SDS PAGE followed by western blot with CAF50168 (IBA1 antibody) at dilution of 1:1000

**This Antibody is for Research Use Only. Not for Diagnostic Procedures.**

This is a sample Antibody manual only. Always refer to the hard copy manual included in the Antibody for your experiment.