

anti- IDE antibody

Product Information

Catalog No.:	CAF50169
Size:	100µg
Form:	liquid
Purification:	Immunogen affinity purified
Purity:	≥95% as determined by SDS-PAGE
Host:	Rabbit
Clonality:	polyclonal
Clone ID:	None
IsoType:	IgG
Storage:	PBS with 0.02% sodium azide and 50% glycerol pH 7.3, -20°C for 12 months (Avoid repeated freeze / thaw cycles.)

Background

Plays a role in the cellular breakdown of insulin, IAPP, glucagon, bradykinin, kallidin and other peptides, and thereby plays a role in intercellular peptide signaling. Degrades amyloid formed by APP and IAPP. May play a role in the degradation and clearance of naturally secreted amyloid beta-protein by neurons and microglia. (Microbial infection) The membrane-associated isoform acts as an entry receptor for varicella-zoster virus(VZV).

Immunogen information

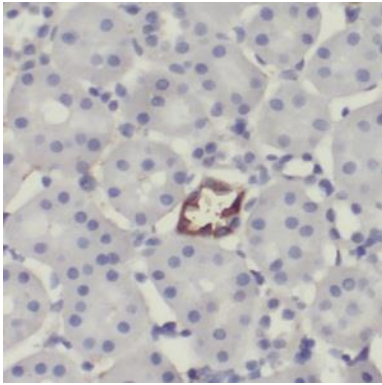
Immunogen:	insulin-degrading enzyme
Synonyms:	None
Observed MW:	100-120 kDa
Uniprot ID :	P14735

Application

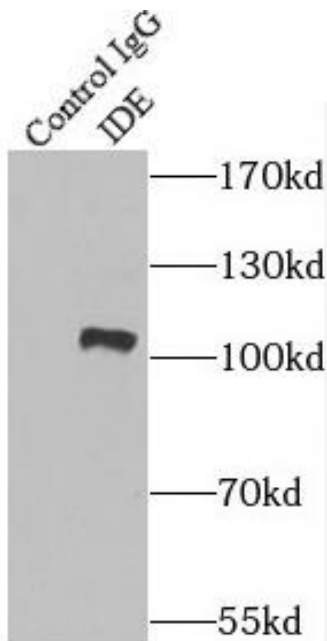
Reactivity:	Human, Mouse, Rat
Tested Application:	ELISA, WB, IHC, IP
Recommended dilution:	WB: 1:500-1:2000; IP: 1:200-1:1000; IHC: 1:20-1:200
Image:	

This Antibody is for Research Use Only. Not for Diagnostic Procedures.

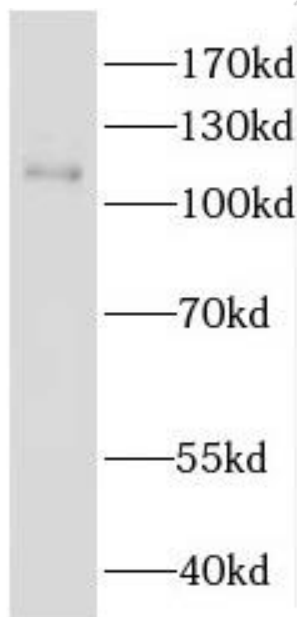
This is a sample Antibody manual only. Always refer to the hard copy manual included in the Antibody for your experiment.



Immunohistochemistry of paraffin-embedded human kidney using CAF50169(IDE antibody) at dilution of 1:50



IP Result of anti-IDE (IP:CAF50169, 4ug; Detection:CAF50169 1:500) with HepG2 cells lysate 1600ug.



HepG2 cells were subjected to SDS PAGE followed by western blot with CAF50169(IDE antibody) at dilution of 1:300

This Antibody is for Research Use Only. Not for Diagnostic Procedures.

This is a sample Antibody manual only. Always refer to the hard copy manual included in the Antibody for your experiment.