

anti- IκB alpha antibody

Product Information

Catalog No.:	CAF50173
Size:	100μg
Form:	liquid
Purification:	Immunogen affinity purified
Purity:	≥95% as determined by SDS-PAGE
Host:	Rabbit
Clonality:	polyclonal
Clone ID:	None
IsoType:	IgG
Storage:	PBS with 0.02% sodium azide and 50% glycerol pH 7.3, -20°C for 12 months (Avoid repeated freeze / thaw cycles.)

Background

None

Immunogen information

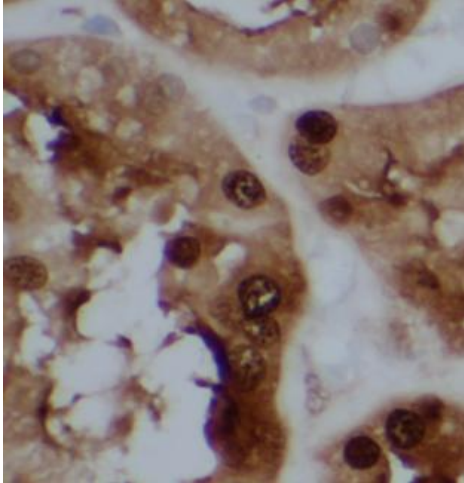
Immunogen:	nuclear factor of kappa light polypeptide gene enhancer in B-cells inhibitor, alpha
Synonyms:	I kappa B alpha, IkappaBalpha, IκB alpha, IKBA, Iκβ-α, MAD 3, MAD3, NF kappa B inhibitor alpha, NFKBI, NFKBIA
Observed MW:	39 kDa
Uniprot ID :	P25963

Application

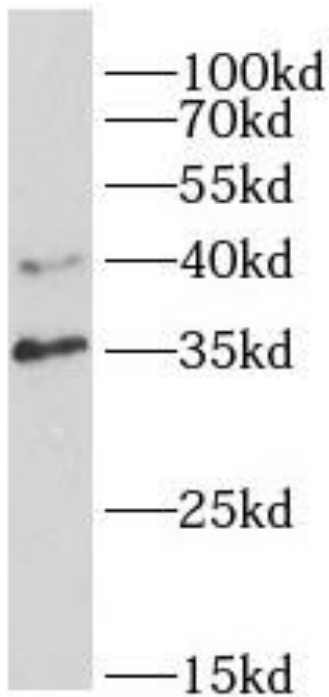
Reactivity:	Human, Mouse
Tested Application:	ELISA, WB, IHC, IF
Recommended dilution:	WB: 1:500-1:2000; IHC: 1:50-1:200; IF: 1:50-1:100
Image:	

This Antibody is for Research Use Only. Not for Diagnostic Procedures.

This is a sample Antibody manual only. Always refer to the hard copy manual included in the Antibody for your experiment.



Immunohistochemistry of paraffin-embedded human kidney tissue slide using CAF50173(IKBA Antibody) at dilution of 1:100



A549 cells were subjected to SDS PAGE followed by western blot with CAF50173(IKBA antibody) at dilution of 1:1000

This Antibody is for Research Use Only. Not for Diagnostic Procedures.

This is a sample Antibody manual only. Always refer to the hard copy manual included in the Antibody for your experiment.