

anti- I κ B beta antibody

Product Information

Catalog No.:	CAF50174
Size:	100 μ g
Form:	liquid
Purification:	Immunogen affinity purified
Purity:	\geq 95% as determined by SDS-PAGE
Host:	Rabbit
Clonality:	polyclonal
Clone ID:	None
IsoType:	IgG
Storage:	PBS with 0.02% sodium azide and 50% glycerol pH 7.3, -20 $^{\circ}$ C for 12 months (Avoid repeated freeze / thaw cycles.)

Background

The protein encoded by this gene belongs to the NF-kappa-B inhibitor family, which inhibit NF-kappa-B by complexing with, and trapping it in the cytoplasm. Phosphorylation of serine residues on these proteins by kinases marks them for destruction via the ubiquitination pathway, thereby allowing activation of the NF-kappa-B, which translocates to the nucleus to function as a transcription factor. Alternatively spliced transcript variants have been found for this gene.

Immunogen information

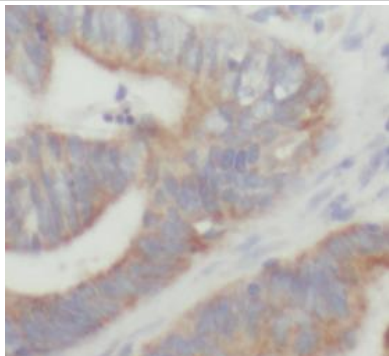
Immunogen:	nuclear factor of kappa light polypeptide gene enhancer in B-cells inhibitor, beta
Synonyms:	I kappa B beta, IkappaBbeta, I κ B B, I κ B beta, IKBB, NF kappa B inhibitor beta, NF kappa BIB, NFKBIB, TR interacting protein 9, TRIP9
Observed MW:	40 kDa
Uniprot ID :	Q15653

Application

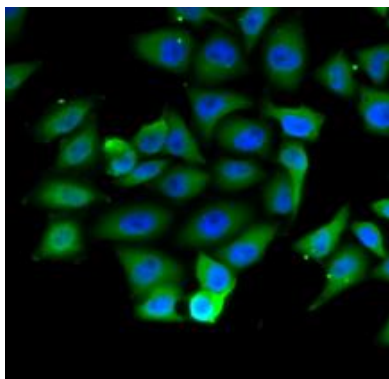
Reactivity:	Human, Mouse, Rat
Tested Application:	ELISA, WB, IHC, IF
Recommended dilution:	WB: 1:500 - 1:2000; IHC: 1:50 - 1:200; IF: 1:50 - 1:200
Image:	

This Antibody is for Research Use Only. Not for Diagnostic Procedures.

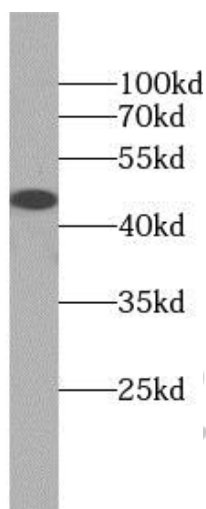
This is a sample Antibody manual only. Always refer to the hard copy manual included in the Antibody for your experiment.



Immunohistochemistry of paraffin-embedded human colon cancer using CAF50174(NFKBIB antibody) at dilution of 1:100



Immunofluorescence analysis of U2OS cells using CAF50174(NFKBIB antibody). Blue: DAPI for nuclear staining.



HeLa cells were subjected to SDS PAGE followed by western blot with CAF50174(NFKBIB antibody) at dilution of 1:1000

This Antibody is for Research Use Only. Not for Diagnostic Procedures.

This is a sample Antibody manual only. Always refer to the hard copy manual included in the Antibody for your experiment.