

anti- IL11RA antibody

Product Information

Catalog No.:	CAF50176
Size:	100µg
Form:	liquid
Purification:	Immunogen affinity purified
Purity:	≥95% as determined by SDS-PAGE
Host:	Rabbit
Clonality:	polyclonal
IsoType:	IgG
Storage:	PBS with 0.02% sodium azide and 50% glycerol pH 7.3, -20°C for 12 months (Avoid repeated freeze / thaw cycles.)

Background

Receptor for interleukin-11. The receptor systems for IL6, LIF, OSM, CNTF, IL11 and CT1 can utilize IL6ST for initiating signal transmission. The IL11/IL11RA/IL6ST complex may be involved in the control of proliferation and/or differentiation of skeletogenic progenitor or other mesenchymal cells. Essential for the normal development of craniofacial bones and teeth. Restricts suture fusion and tooth number.

Immunogen information

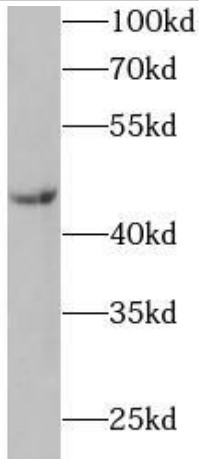
Immunogen:	interleukin 11 receptor, alpha
Synonyms:	IL 11 receptor subunit alpha, IL 11R alpha, IL 11R subunit alpha, IL 11RA, IL11RA, interleukin 11 receptor, alpha
Observed MW:	45 kDa
Uniprot ID :	Q14626

Application

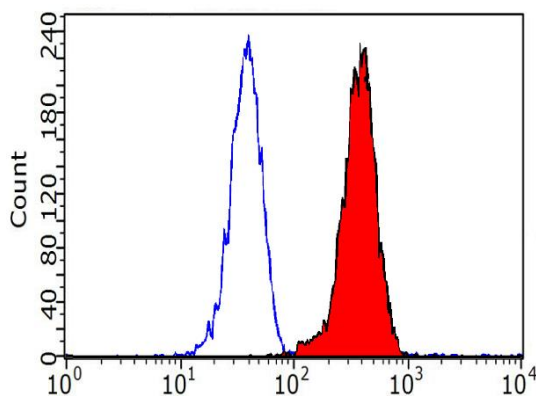
Reactivity:	Human, Mouse, Rat
Tested Application:	ELISA, WB, IF, FC
Recommended dilution:	WB: 1:200-1:1000; IF: 1:20-1:200
Image:	

This Antibody is for Research Use Only. Not for Diagnostic Procedures.

This is a sample Antibody manual only. Always refer to the hard copy manual included in the Antibody for your experiment.



mouse heart tissue were subjected to SDS PAGE followed by western blot with CAF50176(IL11RA Antibody) at dilution of 1:500



1×10^6 K-562 cells were stained with 0.2ug IL11RA antibody (CAF50176, red) and control antibody (blue). Fixed with 90% MeOH blocked with 3% BSA (30 min). FITC-conjugated AffiniPure Goat Anti-Rabbit IgG(H+L) with dilution 1:1000.

This Antibody is for Research Use Only. Not for Diagnostic Procedures.

This is a sample Antibody manual only. Always refer to the hard copy manual included in the Antibody for your experiment.